

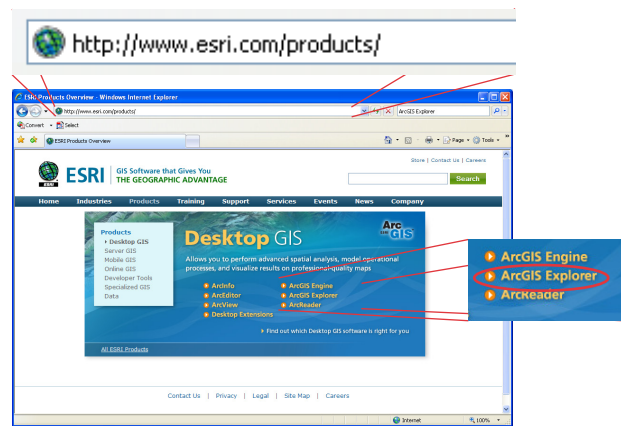
## Getting Started with ArcGIS Explorer: Opening ArcGIS Explorer and Adding Map Data

Welcome to the Essential ArcGIS Task Sheet Series. This series supplements the Iowa State University GIS Geospatial Technology Training Program short course series, "Essential ArcGIS Tutorial Series." The task sheets are designed to provide quick, easy instructions for performing specific tasks in GIS.

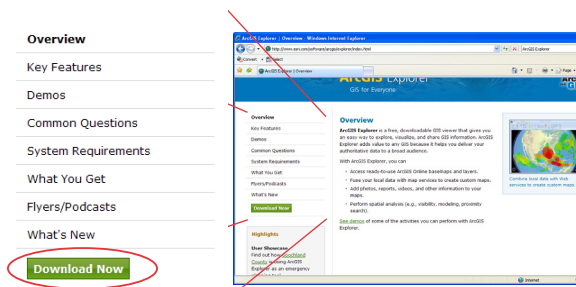
ArcGIS Explorer is a free GIS application produced by ESRI that can be used to access, view and interact with online and local GIS content. The software is available from <http://www.esri.com/> To add shapefiles for this task sheet, download a sample file from the NRGIS web site by consulting task sheet PM2082-09q regarding downloading from the Iowa DNR.

### 1. Downloading ArcGIS Explorer

1. Open a web browser such as **Internet Explorer** or **Firefox**.
  - In the URL box, type **<http://www.esri.com/products>**.
  - Select **ArcGIS Explorer** from the list of Desktop GIS software.
  - Content from **Geodatabase Data...** will open a window asking for the geodatabase type and location.



2. Select the **Download Now** icon in the table of contents from the next page.



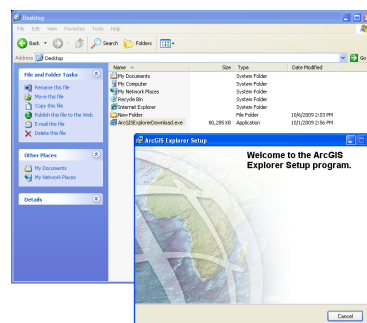
### Download ArcGIS Explorer

1. Install **Microsoft .NET Framework 2.0, Service Pack 1**, if you don't have it already.
  - Check other [system requirements](#).
2. Download ArcGIS Explorer  
[English](#) | [French](#) | [German](#) | [Japanese](#) | [Spanish](#)

4. Follow the steps given through the setup process.

### 2. Starting ArcGIS Explorer

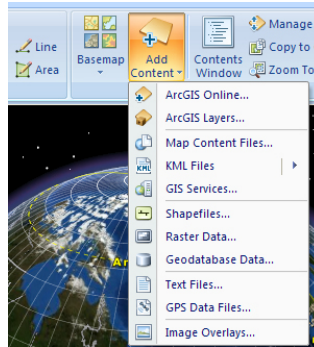
Click **Start > Programs > ArcGIS > Explorer**.



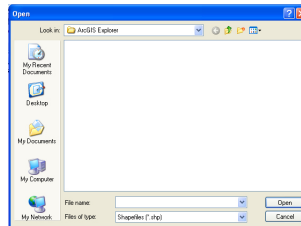
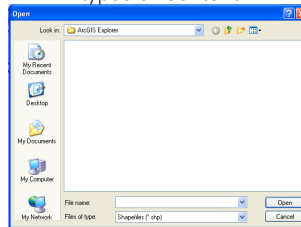
### 3. Adding Map Data

1. Select **Add Content** in the ArcGIS Explorer **Home** ribbon.

- A list of choices will appear. Content appearing on a local machine (KML, Raster Data, Text Files, GPS Data Files, and Image Overlays) will open the Windows Explorer open menu.
- Content from **GIS Services...** will open a window for the location of the GIS Service URL, username and password.
- Content from **ArcGIS Online...** will open the default web browser to search for user-created content on the web posted from the ArcGIS Online portal.
- Content from **Geodatabase Data...** will open a window asking for the geodatabase type and location.

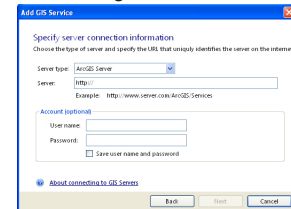


Adding all other types of Content

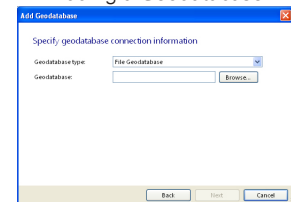


Get Started    Use ArcGIS Online    See ESRI Maps and Data

#### Adding a GIS Service

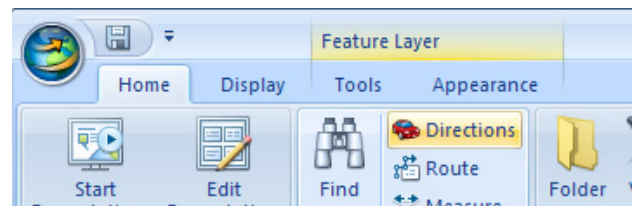


#### Adding a Geodatabase



2. Select **Shapefiles...** from the **Add Content** drop-down menu.

- Browse to and locate a shapefile to add.
- Once the content is added, two new options are added to the ArcGIS Explorer Ribbon.
- The **Tools** tab contains organization, view and effects options.
- The **Appearance** tab contains tools for changing popup content (see task sheet PM2082-09i on Adding Feature Tips and Hyperlinks), symbols (see task sheet PM2082-09p on Adding and Customizing Layers) and display range.



### Contacts

For more information about ArcGIS Explorer, contact:

Christopher J. Seeger, ASLA, GISP  
cjseeger@iastate.edu or 515-294-3648.

For information about the ISU Extension Geospatial Technology Program, contact:

Alan Jensen, AICP  
adjensen@iastate.edu or 515-294-2073.

This task sheet and more are available for free download at [www.extension.iastate.edu/gis](http://www.extension.iastate.edu/gis).

... and justice for all  
The U.S. Department of Agriculture (USDA) prohibits discrimination in all its programs and activities on the basis of race, color, national origin, gender, religion, age, disability, political beliefs, sexual orientation, and marital or family status. (Not all prohibited bases apply to all programs.) Many materials can be made available in alternative formats for ADA clients. To file a complaint of discrimination, write USDA, Office of Civil Rights, Room 326-W, Whitten Building, 14th and Independence Avenue, SW, Washington, DC 20250-9410 or call 202-720-5964.