

Getting Started with Google Maps: Migrating KML files to ArcMap (Interoperability Extension)

Welcome to the Essential ArcGIS Task Sheet Series. This series supplements the Iowa State University GIS Geospatial Technology Training Program short course series, "Essential ArcGIS Tutorial Series." The task sheets are designed to provide quick, easy instructions for performing specific tasks in GIS.

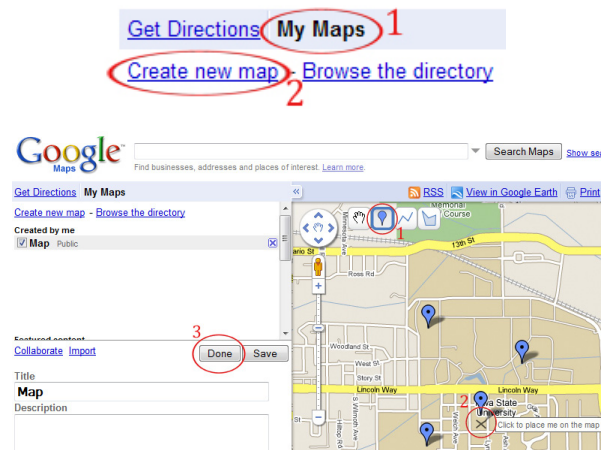
Google Maps is an online resource provided by Google. To access content on this task sheet, Google Earth must be installed and can be found at <http://earth.google.com/>. To access Google's My Maps resource, a Google account is required and can be set up at <https://www.google.com/accounts/NewAccount>

1. Creating a Map in Google Maps

Go to <http://maps.google.com>.

1. Click **My Maps > Create New Map**.

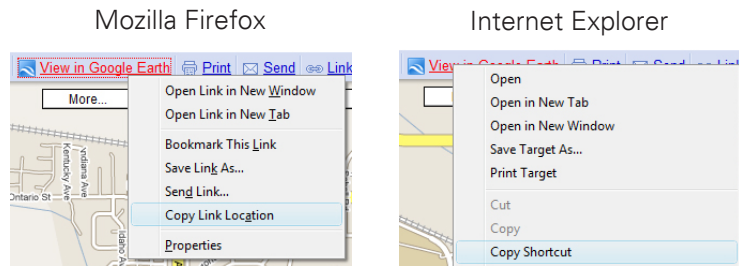
- Create a few points by clicking on the **Add a Placemark** tool.
- Add a **Name** and **Description** to any points created.
- When finished, click **Done**.



2. Accessing Data in KML Format

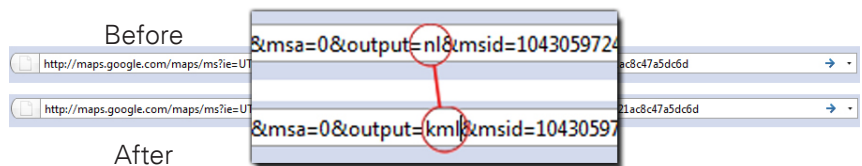
1. Right click the **View in Google Earth** link.

- Select **Copy Link Location** in Mozilla Firefox or **Copy Shortcut** in Internet Explorer.



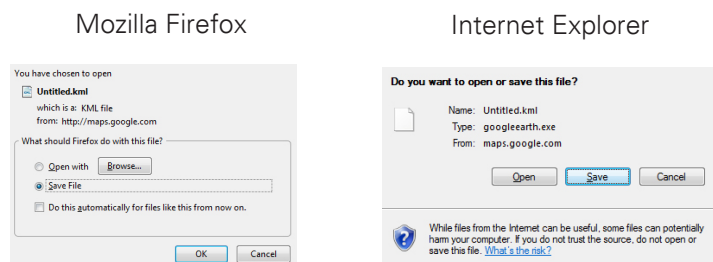
2. Open up a new tab or window.

- Paste the link into the URL bar.
- Replace **nl** with **kml**.
- Press the **Return** key on the keyboard.



3. A save file window should appear.

- In Firefox, select **Save File**, then click **OK**.
- In Internet Explorer, select **Save**.
- Select a destination to save the file.

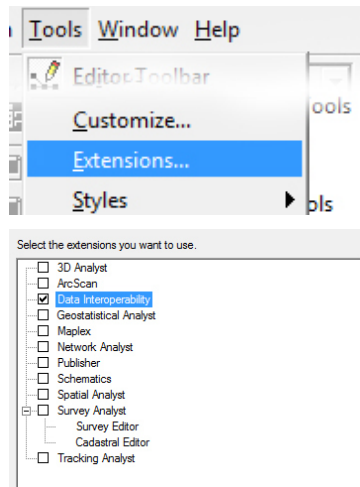


Note: Depending on the browser and options set, the KML file may be automatically downloaded to a preset location.

3. Enable the Data Interoperability Extension

Open ArcMap

1. Select **Tools > Extensions....**



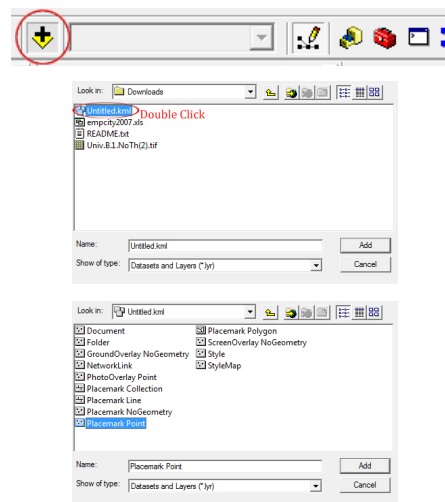
2. In the **Extensions** window click the box next to **Data Interoperability**.

3. Click **Close**.

4. Add KML Data

1. Select the **Add Data** icon.

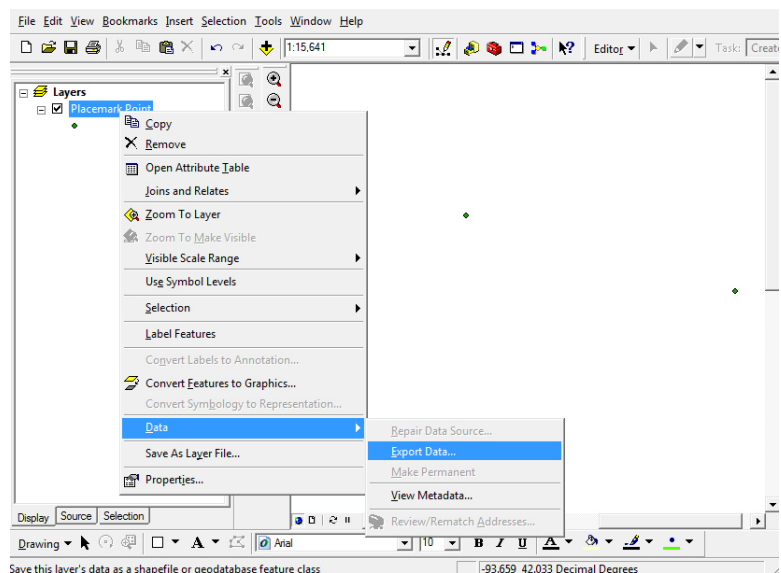
- Browse to the KML file to be opened within the **Add Data** window.
- Double click the KML file to browse its features.



2. Click the **Placemark Point** feature then click **Add**.

3. Export the map to set the coordinate system of the data frame.

- Right click the added layer in the **Table of Contents**.
- Click **Data > Export Data....**
- Click **OK**
- Click **Yes** to add the map layer.



Contacts

For more information about Google Maps, contact:

Christopher J. Seeger, ASLA, GISP
cjseeger@iastate.edu.

For information about the ISU Extension Geospatial Technology Program, contact:

Alan Jensen, AICP
adjensen@iastate.edu or 515-294-2073.

This task sheet and more are available for free download at www.extension.iastate.edu/gis.

... and justice for all

The U.S. Department of Agriculture (USDA) prohibits discrimination in all its programs and activities on the basis of race, color, national origin, gender, religion, age, disability, political beliefs, sexual orientation, and marital or family status. (Not all prohibited bases apply to all programs.) Many materials can be made available in alternative formats for ADA clients. To file a complaint of discrimination, write USDA, Office of Civil Rights, Room 326-W, Whitten Building, 14th and Independence Avenue, SW, Washington, DC 20250-9410 or call 202-720-5964.

Issued in furtherance of Cooperative Extension work, Acts of May 8 and June 30, 1914 in cooperation with the U.S. Department of Agriculture. Jack M. Payne, director, Cooperative Extension Service, Iowa State University of Science and Technology, Ames, Iowa.