

Getting Started with ArcGIS: Converting ArcView Shapefiles to KML

Welcome to the Essential ArcGIS Task Sheet Series. This series supplements the Iowa State University GIS Geospatial Technology Training Program short course series, "Essential ArcGIS Tutorial Series." The task sheets are designed to provide quick, easy instructions for performing specific tasks in GIS.

The DNR GARMIN program is a free application from the Minnesota DNR. The software is available from <http://www.dnr.state.mn.us/mis/gis/tools/arcview/extensions/DNRGarmin/DNRGarmin.html>

1. Open DNR Garmin

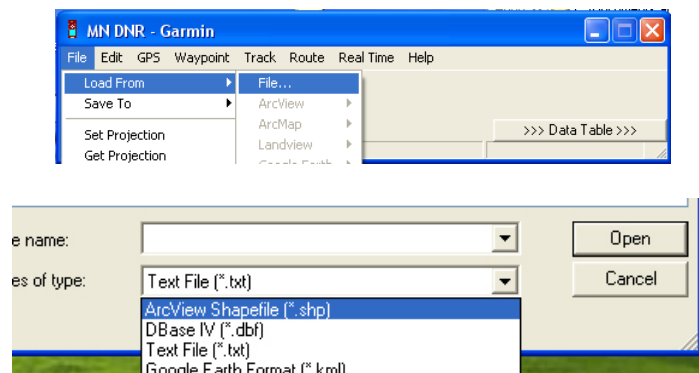
Click **Start > Programs > DNR Garmin > DNRGarmin**.

2. Loading Spatial Data

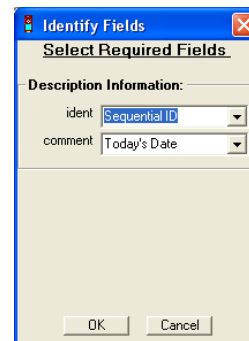
Click **File > Load From > File...**

1. Locate the shapefile to be converted.

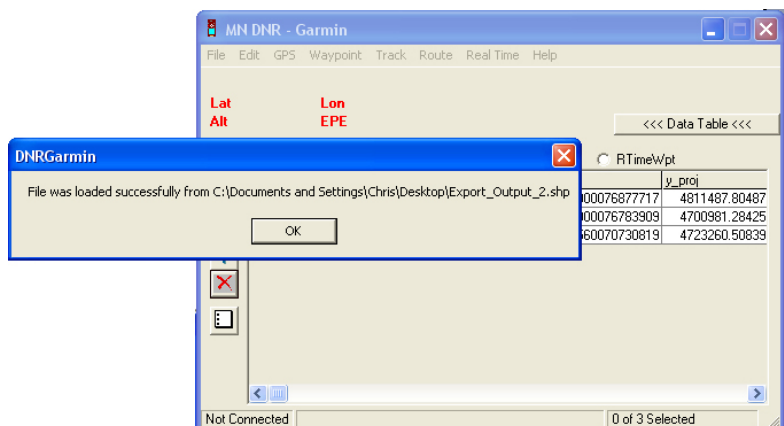
- In the **Files of type:** dropdown menu, select **ArcView Shapefile (*.shp)**.
- Browse and select the shapefile to be converted.
- Click **Open**.



2. In the **Identify Fields** window click **OK** to accept the defaults.

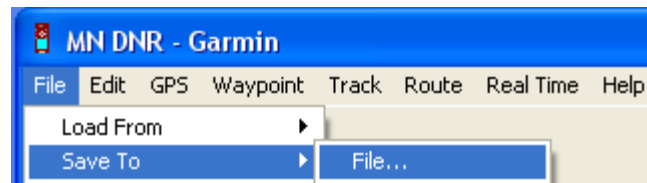


2. Click **OK** when the file loads successfully.

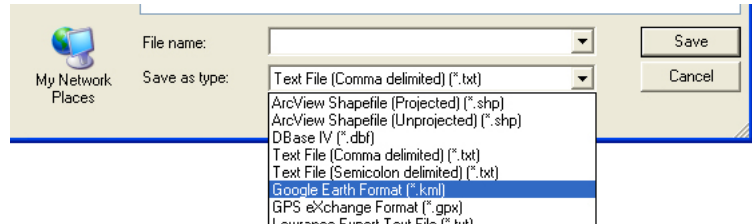


2. Saving to KML

Click **File** > **Save To** > **File...**



1. Select the desired location and format for the spatial data.
 - In the **Format:** dropdown menu select **Google Earth Format (*.kml)**.
 - Browse to the desired location to save the KML file and select **Save**.
2. Click **OK** when the file has been written successfully.
3. The shapefile is now ready to be opened in any program supporting KML files, such as Google Earth or Google Maps.



Contacts

For more information about DNR Garmin software, contact:

Christopher J. Seeger, ASLA, GISP
cjseeger@iastate.edu.

For information about the ISU Extension Geospatial Technology Program, contact:

Alan Jensen, AICP
adjensen@iastate.edu or 515-294-2073.

This task sheet and more are available for free download at www.extension.iastate.edu/gis.

... and justice for all
The U.S. Department of Agriculture (USDA) prohibits discrimination in all its programs and activities on the basis of race, color, national origin, gender, religion, age, disability, political beliefs, sexual orientation, and marital or family status. (Not all prohibited bases apply to all programs.) Many materials can be made available in alternative formats for ADA clients. To file a complaint of discrimination, write USDA, Office of Civil Rights, Room 326-W, Whitten Building, 14th and Independence Avenue, SW, Washington, DC 20250-9410 or call 202-720-5964.

Issued in furtherance of Cooperative Extension work, Acts of May 8 and June 30, 1914 in cooperation with the U.S. Department of Agriculture. Jack M. Payne, director, Cooperative Extension Service, Iowa State University of Science and Technology, Ames, Iowa.