

Getting Started with ArcGIS Explorer: Adding ESRI Maps and Layers

Welcome to the Essential ArcGIS Task Sheet Series. This series supplements the Iowa State University GIS Geospatial Technology Training Program short course series, "Essential ArcGIS Tutorial Series." The task sheets are designed to provide quick, easy instructions for performing specific tasks in GIS.

ArcGIS Explorer is a free GIS application produced by ESRI that can be used to access, view and interact with online and local GIS content. The software is available from <http://www.esri.com/>

1. Open ArcGIS Explorer

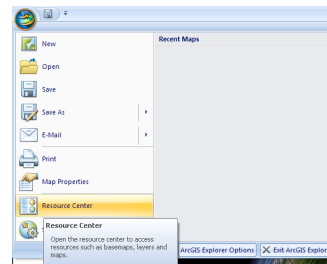
Click **Start > Programs > ArcGIS > Explorer**.

2. Adding ESRI Resource Center Maps

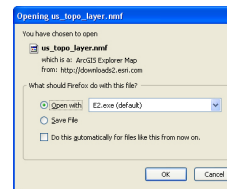
Click **File > Resource Center...**

ArcGIS Explorer will open up the default web browser to the ESRI Resource Center where a variety of maps can be chosen.

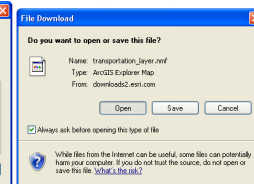
1. Select any of the world maps by clicking on the link or the globe image or select the **Description** to view more information about the map.



- In Internet Explorer, select **Open**.
- In Mozilla Firefox, select **Open with**, make sure **E2.exe (default)** is selected and then click **OK**.



Mozilla Firefox

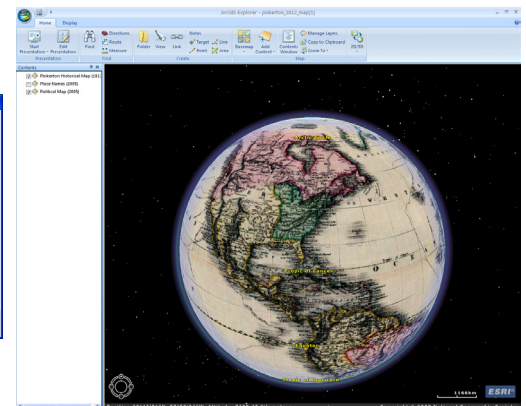
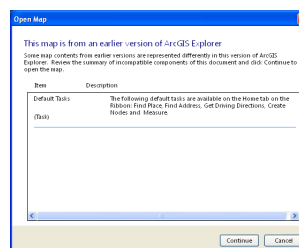


Internet Explorer

2. ArcGIS Explorer will open up a new map document. A warning may appear saying that the map is from an earlier version of ArcGIS Explorer. Click **Continue** and close the other ArcGIS Explorer document.

Notice:

The resource center was a part of previous versions of ArcGIS Explorer, although will still work with this version. The resource center still provides basemaps not found with ArcGIS Explorer's default basemaps.



3. Adding ESRI Resource Center Layers

ESRI Resource Center layers add content that overlays basemap data rather than replacing the basemap.

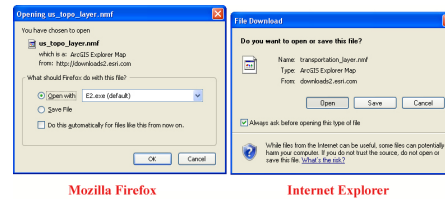
1. Reopen the ESRI Resource Center website.
2. Click **Layers** near the top of the page.



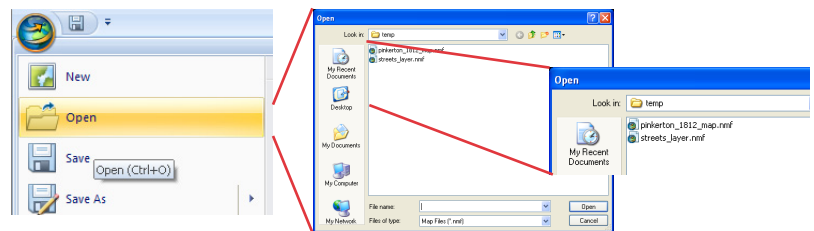
- Select the link or image to add the layer in ArcGIS Explorer or select **Description** to view more information on the layer.



- In Internet Explorer, select **Save**.
- In Mozilla Firefox, select **Save File** and click **OK**.
- Save the file to a location easy to find on the computer such as **C:\Temp** or the desktop. A **.nmf** file will be downloaded.



3. In ArcGIS Explorer, click the ArcGIS Explorer Globe Icon and select **Open**.



4. To the right is an example with ESRI Resource Center **Streets** added.

Contacts

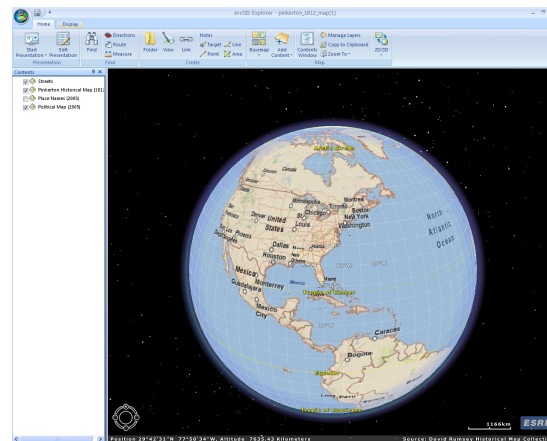
For more information about ArcGIS Explorer, contact:

Christopher J. Seeger, ASLA, GISP
 cjseeger@iastate.edu or 515-294-3648.

For information about the ISU Extension Geospatial Technology Program, contact:

Alan Jensen, AICP
 adjensen@iastate.edu or 515-294-2073.

This task sheet and more are available for free download at www.extension.iastate.edu/gis.



... and justice for all
 The U.S. Department of Agriculture (USDA) prohibits discrimination in all its programs and activities on the basis of race, color, national origin, gender, religion, age, disability, political beliefs, sexual orientation, and marital or family status. (Not all prohibited bases apply to all programs.) Many materials can be made available in alternative formats for ADA clients. To file a complaint of discrimination, write USDA, Office of Civil Rights, Room 326-W, Whitten Building, 14th and Independence Avenue, SW, Washington, DC 20250-9410 or call 202-720-5964.