

Getting Started With ArcMap: Displaying Multiple Attributes

Welcome to the Essential ArcGIS Task Sheet Series. This series supplements the Iowa State University GIS Geospatial Technology Training Program short course series, "Essential ArcGIS Tutorial Series." The task sheets are designed to provide quick, easy instructions for performing specific tasks in GIS.

Layer symbology allows for spatial representation of data. ArcMap allows for multiple attributes to be displayed through editing the layer properties, which can increase effectiveness of the content displayed on the map.

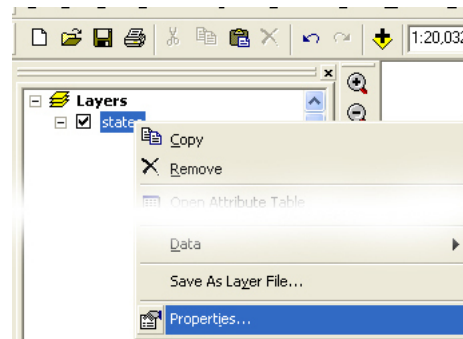
1. Add a Polygon Shapefile

Use the **states** shapefile found on the delphi server or add your own that contains multiple attributes.

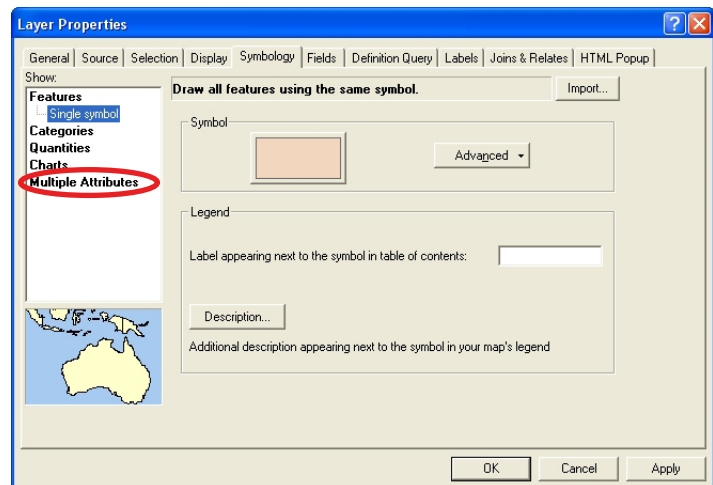
For delphi Server data navigate to **\\delphi.gis.iastate.edu\GESEO\Essential GIS\Data\National-Regional**

2. Adding Multiple Charts

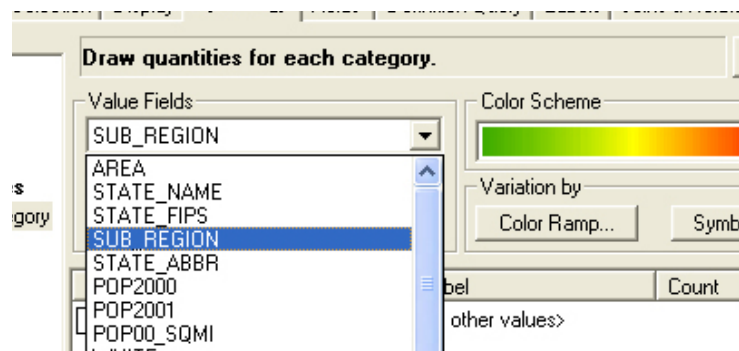
Right click the **states** layer in the **Table of Contents** and select **Properties...**



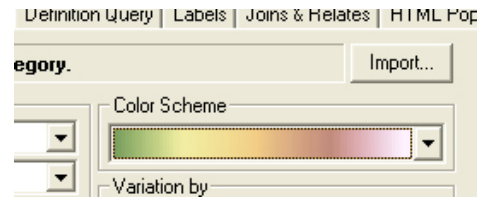
1. Click the **Symbology** tab in the layer properties window.
2. Click **Multiple Attributes** from the **Show:** window.



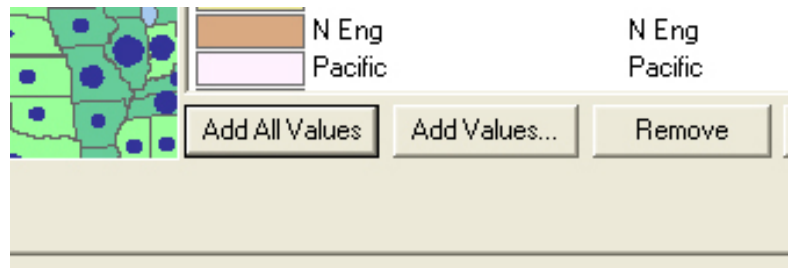
3. Under the **Value Fields** in the layer properties window, select **SUB_REGION** in the first drop down menu. These features are categorized within the attribute table.



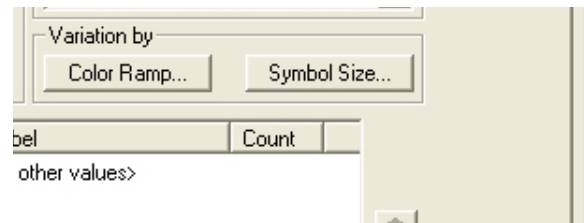
4. Under **Color Scheme**, select the green to pink color bar.



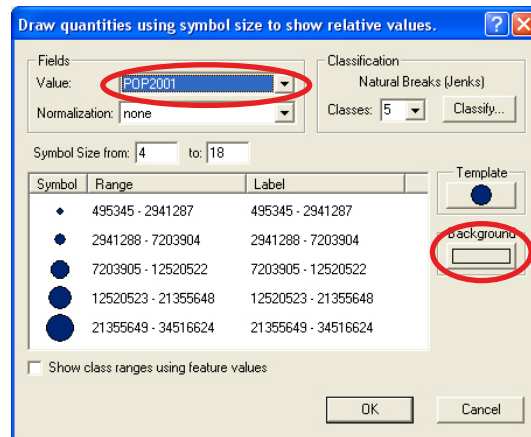
5. Click **Add All Values** near the bottom of the window.



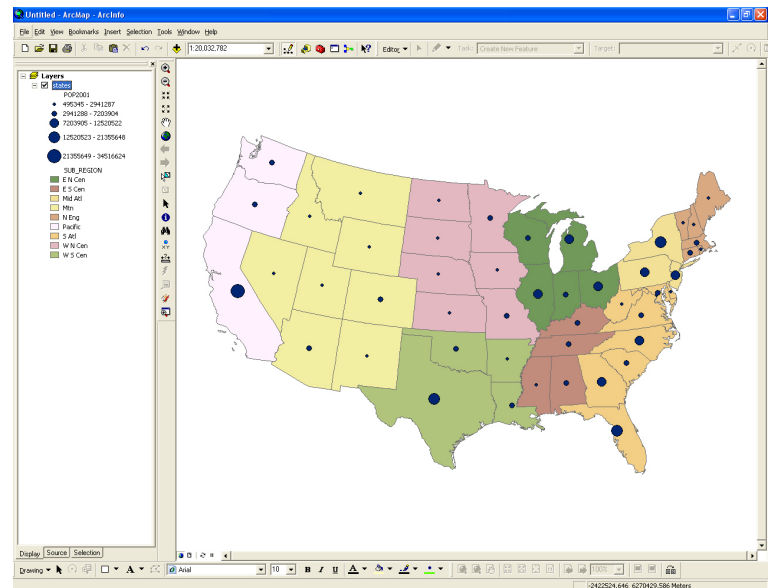
6. Under **Variation by**, select **Symbol Size...**



- Under **Value:** select **POP2001**.
- Click **Background** and select the **Hollow** symbol and click **OK**.
- Click **OK** in the **Draw quantities using a symbol size to show relative values** window.



7. Click **OK** in the layer properties window to see the results on the map.



Contacts

For more information about ArcGIS Explorer, contact:

Christopher J. Seeger, ASLA, GISP
cjseeger@iastate.edu or 515-294-3648.

For information about the ISU Extension Geospatial Technology Program, contact:

Alan Jensen, AICP
adjensen@iastate.edu or 515-294-2073.

This task sheet and more are available for free download at www.extension.iastate.edu/gis.

... and justice for all

The U.S. Department of Agriculture (USDA) prohibits discrimination in all its programs and activities on the basis of race, color, national origin, gender, religion, age, disability, political beliefs, sexual orientation, and marital or family status. (Not all prohibited bases apply to all programs.) Many materials can be made available in alternative formats for ADA clients. To file a complaint of discrimination, write USDA, Office of Civil Rights, Room 326-W, Whitten Building, 14th and Independence Avenue, SW, Washington, DC 20250-9410 or call 202-720-5964.

Issued in furtherance of Cooperative Extension work, Acts of May 8 and June 30, 1914 in cooperation with the U.S. Department of Agriculture. Jack M. Payne, director, Cooperative Extension Service, Iowa State University of Science and Technology, Ames, Iowa.