

Getting Started with ArcGIS Explorer: Adding and Customizing Layers

Welcome to the Essential ArcGIS Task Sheet Series. This series supplements the Iowa State University GIS Geospatial Technology Training Program short course series, "Essential ArcGIS Tutorial Series." The task sheets are designed to provide quick, easy instructions for performing specific tasks in GIS.

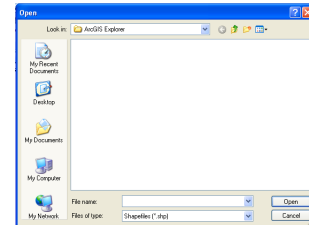
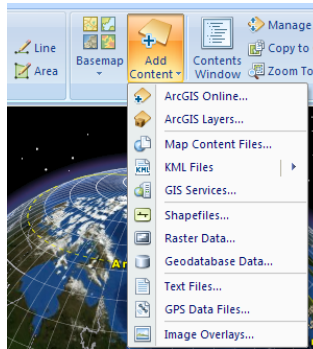
ArcGIS Explorer is a free GIS application produced by ESRI that can be used to access, view and interact with online and local GIS content. The software is available from <http://www.esri.com/>

1. Open ArcGIS Explorer

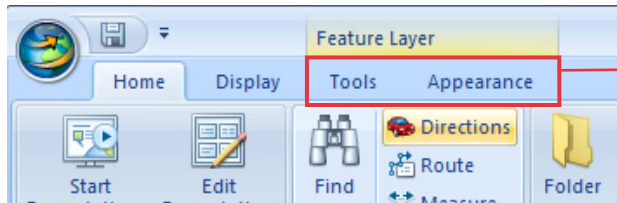
Click **Start > Programs > ArcGIS > Explorer**.

2. Add Content

1. Select **Add Content** in the ArcGIS Explorer **Home** ribbon.
2. Select **Shapefiles...** from the **Add Content** drop-down menu.



- Once the content is added, two new options are added to the ArcGIS Explorer Ribbon.
- The **Tools** tab contains organization, view and effects options.
- The **Appearance** tab contains tools for changing popup content (see task sheet PM2082-09i Adding Feature Tips and Hyperlinks), symbols and display range.

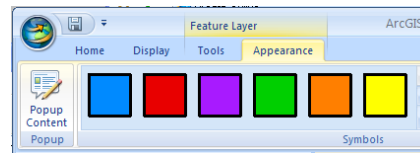


Tabs added once content is added to the map.

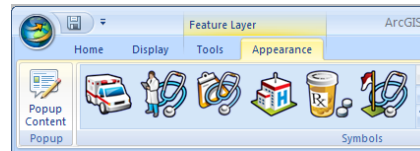
3. Editing Content

1. Once the content is added, select **Appearance** from the ArcGIS ribbon.
2. Under **Symbols** different colors or symbols are available depending on layer types. Select the arrows next to the symbols for different options and styles.

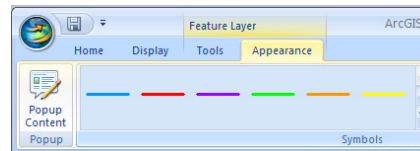
Polygons



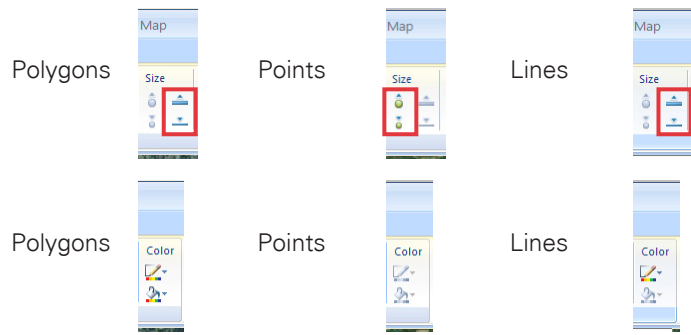
Points



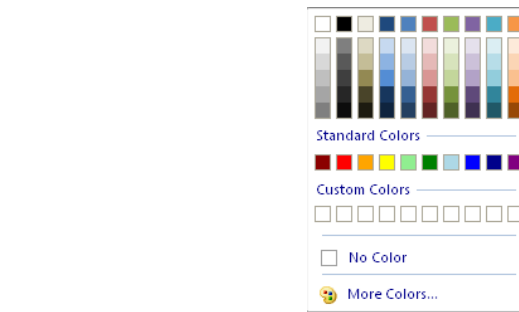
Lines



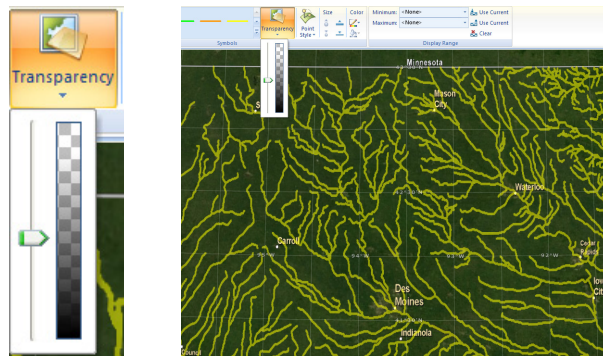
3. Under **Size** select the symbols to increase or decrease the line width on lines and polygons and the marker size on points.



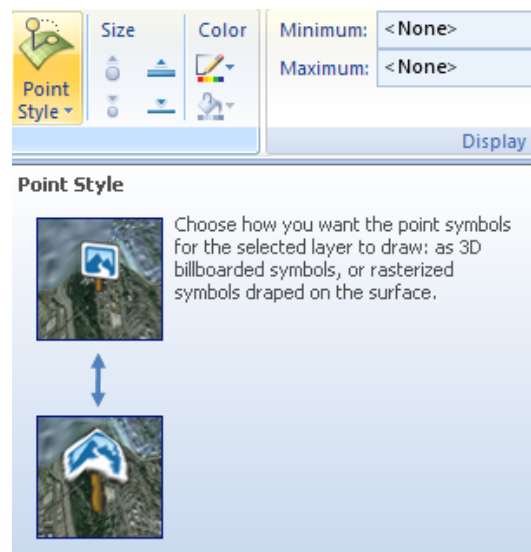
4. The **Color** option allows for customization of the feature's color. Notice that the points layer has its options grayed out and are unselectable as well as the lines fill color. These options are unselectable for these layer types.



5. Under **Transparency** select the level at which underlying features can be seen.



6. The **Point Style** icon selects how points will be displayed either as 3-D or 2-D rasterized symbols draped across the landscape (note: this option is only available for point layers).



Contacts

For more information about ArcGIS Explorer, contact:

Christopher J. Seeger, ASLA, GISP
 cjseeger@iastate.edu or 515-294-3648.

For information about the ISU Extension Geospatial Technology Program, contact:

Alan Jensen, AICP
 adjensen@iastate.edu or 515-294-2073.

This task sheet and more are available for free download at www.extension.iastate.edu/gis.

... and justice for all
 The U.S. Department of Agriculture (USDA) prohibits discrimination in all its programs and activities on the basis of race, color, national origin, gender, religion, age, disability, political beliefs, sexual orientation, and marital or family status. (Not all prohibited bases apply to all programs.) Many materials can be made available in alternative formats for ADA clients. To file a complaint of discrimination, write USDA, Office of Civil Rights, Room 326-W, Whitten Building, 14th and Independence Avenue, SW, Washington, DC 20250-9410 or call 202-720-5964.