

## Getting Started with ET GeoWizards: Downloading and Enabling ArcMap Add-Ons

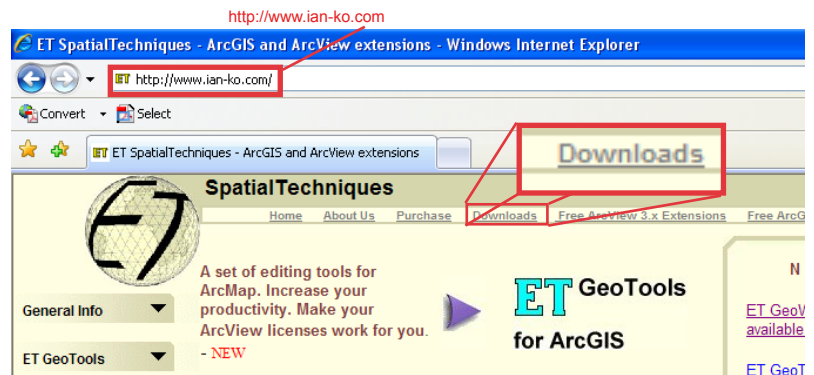
Welcome to the Essential ArcGIS Task Sheet Series. This series supplements the Iowa State University GIS Geospatial Technology Training Program short course series, "Essential ArcGIS Tutorial Series." The task sheets are designed to provide quick, easy instructions for performing specific tasks in GIS.

ET GeoWizards is an ArcMap add-on or extension that increases geoprocessing functionality. This tool provides added functionality and new features to all license levels of ArcGIS but is particularly useful to the ArcView version. ET GeoWizards can be downloaded at <http://www.ian-ko.com>. This is a commercial application, but a free version with limited functionality is offered.

### 1. Downloading & Installing ET GeoWizards

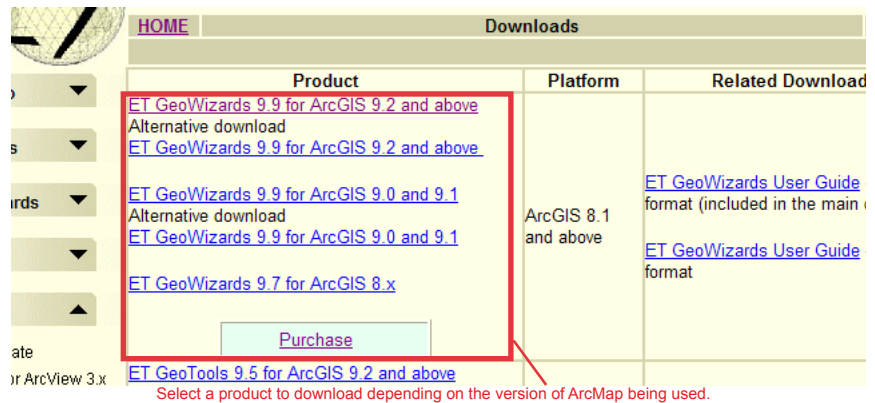
Open a web browser and visit the ET GeoWizards website at <http://www.ian-ko.com>.

1. Click **Downloads** at the top of the page.

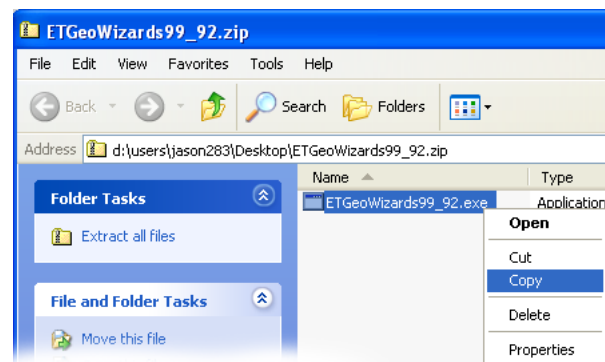


2. Under **Product**, click **ET GeoWizards 9.9 for ArcGIS 9.2 and above** or **ET GeoWizards 9.9 for ArcGIS 9.0 and 9.1**, depending on the version of ArcMap being used.

- Save the file to a location on the computer.



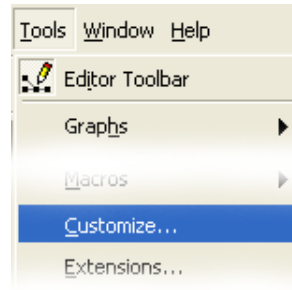
- Open the zip file and copy the installation file to a folder location outside of the zip file.



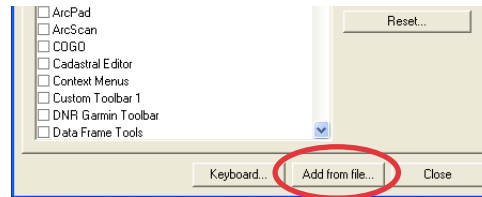
3. Double click on the installation file and follow the directions through the installation process.

## 2. Enabling ET GeoWizards in ArcMap

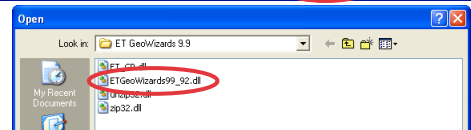
1. Open ArcMap by clicking **Start > Programs > ArcGIS > ArcMap**.
2. Click on **Tools > Customize...**



- Click **Add from file...**

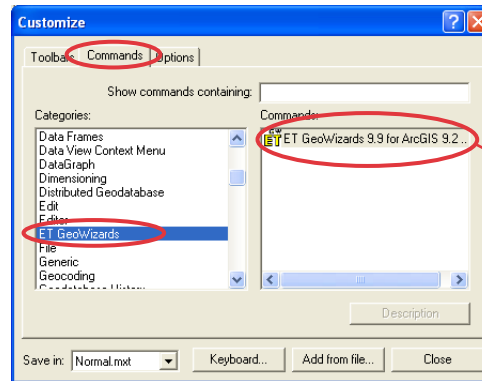


- Navigate to the folder where ET GeoWizards is installed (typically found at **C: > Program Files > ET GeoWizards x.x**) and add the file **ET GeoWizardsxx**.



- Click **OK** from the **Added Objects...** window.

- In the **Customize** window, click the **Commands** tab and under **Categories:** select **ET GeoWizards**.



Click and drag this to a toolbar in ArcMap to create a link to the wizard.

- Click and drag the **ET GeoWizards for ArcGIS** located under **Commands:** and drop it in any toolbar in ArcMap..

- Click **Close** from the **Customize** window.

3. Click the **ET GeoWizards** icon to open the tool.



ET GeoWizards

4. The **ET GeoWizards** add-on has a variety of tools that are either new to ArcMap or are only available in the ArcEditor or ArcInfo licenses. The bottom ribbon categorizes tools by function.

### Contacts

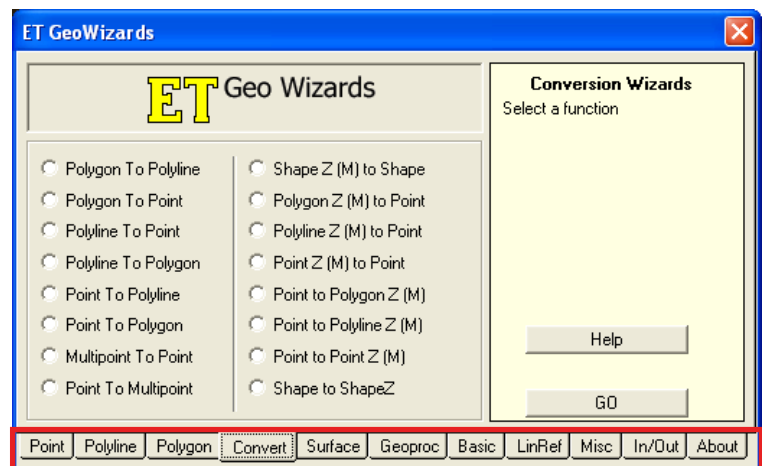
For more information about Geospatial technology, contact:

Christopher J. Seeger, ASLA, GISP  
cjseeger@iastate.edu or 515-294-3648.

For information about the ISU Extension Geospatial Technology Program, contact:

Alan Jensen, AICP  
adjensen@iastate.edu or 515-294-2073.

This task sheet and more are available for free download at [www.extension.iastate.edu/gis](http://www.extension.iastate.edu/gis).



Function Types

... and justice for all

The U.S. Department of Agriculture (USDA) prohibits discrimination in all its programs and activities on the basis of race, color, national origin, gender, religion, age, disability, political beliefs, sexual orientation, and marital or family status. (Not all prohibited bases apply to all programs.) Many materials can be made available in alternative formats for ADA clients. To file a complaint of discrimination, write USDA, Office of Civil Rights, Room 326-W, Whitten Building, 14th and Independence Avenue, SW, Washington, DC 20250-9410 or call 202-720-5964.

Issued in furtherance of Cooperative Extension work, Acts of May 8 and June 30, 1914 in cooperation with the U.S. Department of Agriculture. Jack M. Payne, director, Cooperative Extension Service, Iowa State University of Science and Technology, Ames, Iowa.