

Can You Find the BUZZ WORDS?

Circle all the words in the puzzle that you can find from the word bank below.

Beehive	Beekeeper	Beeswax
Comb	Drone	Extractor
Honey	Nectar	Pollen
Pollination	Queen	Worker

L Y V A D F F K K Z H I E
 N P E U W D D R F T C Q X
 Y E H P B H V A S Z A I T
 P O L L I N A T I O N N R
 B Q Z L A I L C P K C B A
 V E U N O R K E X W E G C
 F W E E E P K N U E H O T
 O S R K E L E H H X B Q O
 E Q R U E N Y I C I O E R
 V O D I V E V O H O N E Y
 W D A V I E P U P D P T R
 X A W S E E B E S R G E K
 V J V U P K K D R O Z U C
 D O A A I J N T V N K O F
 L L K Y N U Y X B E M B R
 J F K O I S E R R B O X A

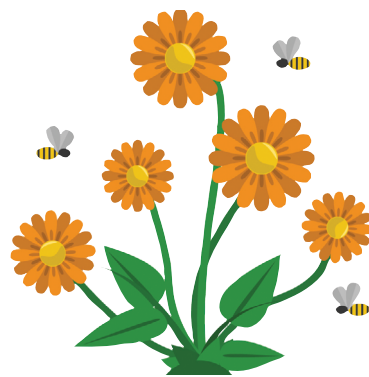


Illustration by Amelie/AdobeStock.com

This brochure was created through a partnership between:



For more information please visit:

www.extension.iastate.edu
www.iowahoneyproducers.org

Bee and flower illustrations by Golden Sikorka/AdobeStock.com.
 Beehive illustration by Narstudio/AdobeStock.com.
 Beekeeper and honey jar illustrations by Vectorstocker/AdobeStock.com.

Iowa State University Extension and Outreach does not discriminate on the basis of age, disability, ethnicity, gender identity, genetic information, marital status, national origin, pregnancy, race, religion, sex, sexual orientation, socioeconomic status, or status as a U.S. veteran. (Not all prohibited bases apply to all programs.) Inquiries regarding non-discrimination policies may be directed to the Diversity Officer, 2150 Beardshear Hall, 515 Morrill Road, Ames, Iowa 50011, 515-294-1482, extdiversity@iastate.edu. All other inquiries may be directed to 800-262-3804.

ENT 0049 June 2018



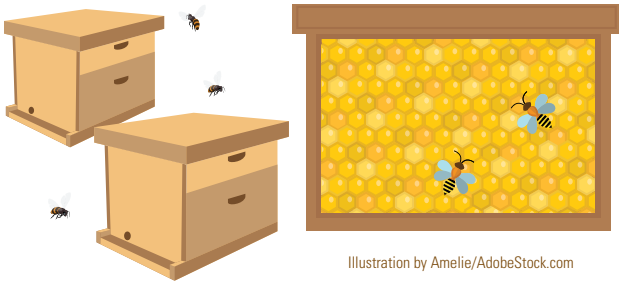
Hi,
 I'm Beekeeper Ben! Let me tell you about my bees, what life in a beehive is like, and what bees do for you every single day!



IOWA STATE UNIVERSITY
 Extension and Outreach

These are my beehives!

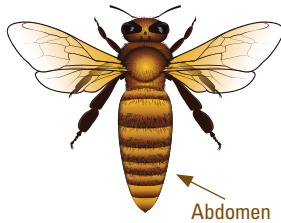
Honey bee colonies are kept in wooden hives. Each **beehive** is home to up to 60,000 bees! Inside the hive the bees build **comb** out of **beeswax** in the form of hexagon shaped cells. The comb is where they take care of their young and where they store **nectar**, **pollen**, and **honey**.



There are three types of honey bee!

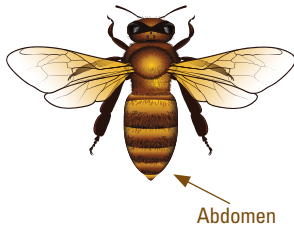
QUEEN

Each hive has only one queen bee. She is the largest bee, and has a large and long abdomen. The queen can lay up to 2,000 eggs every day.



WORKER

The majority of the hive is worker bees and they are all female. They have many jobs in the hive, including foraging for nectar and pollen as well as taking care of the young.



DRONE

Only a few of the bees in the hive are drones and they are all male. They are larger than worker bees and have bigger eyes. Their job is to mate with new queens.

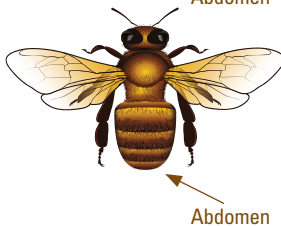


Illustration by Simenvd/AdobeStock.com

Worker bee jobs



They are called workers for a reason. The worker bees act like a team and have many different jobs throughout their lifetime. Let's take a look at some of the different tasks they perform.

NURSING

Nurse bees feed developing bees a special food called "worker jelly" secreted from glands in their head. They also care for the young.

BUILDING COMB

Workers also build new honeycomb out of beeswax that they secrete from glands in their abdomen.

GUARDING

Some workers sit at the hive entrance and defend it from intruders, such as wasps or mammals, that are drawn to the hive by the smell of delicious honey.

FORAGING

Scout bees and foragers can travel up to two miles. Bees have pollen baskets on their hind legs that carry pollen collected from flowers.

Scout bees communicate with foragers through a waggle dance that tells them where to find blooming plants.



Planting for bees

Not ALL flowers are high quality sources of nectar and pollen for bees. Just because a flower is pretty doesn't mean it provides the type of food bees need. Some flowers bees love are:



- Asters
- Clovers
- Goldenrod
- Coneflowers
- Sunflowers

Pollination

Many crops need bees to visit their flowers and spread their pollen in order to produce many of the foods we love. One out of every three bites of food we eat was pollinated by bees. We have bees to thank for the following fruits and vegetables:

- Almonds
- Apples
- Apricots
- Avocados
- Beans
- Blueberries
- Cantaloupes
- Cherries
- Cucumbers
- Grapefruits
- Lemons
- Oranges
- Pears
- Pumpkins
- Raspberries
- Strawberries
- Watermelons
- Zucchini

Harvesting honey

When the bees have collected enough honey, beekeepers, like me, open the hive and remove the comb to harvest the honey. We place it in a big spinning machine called a honey **extractor** that whirls the comb around to remove all the honey so that people can take it home to enjoy.

