

GeoTagged Photos To Points

Welcome to the Essential ArcGIS Task Sheet Series. This series supplements the Iowa State University GIS Geospatial Technology Training Program short course series, “Essential ArcGIS Tutorial Series.” The task sheets are designed to provide quick, easy instructions for performing specific tasks in GIS.

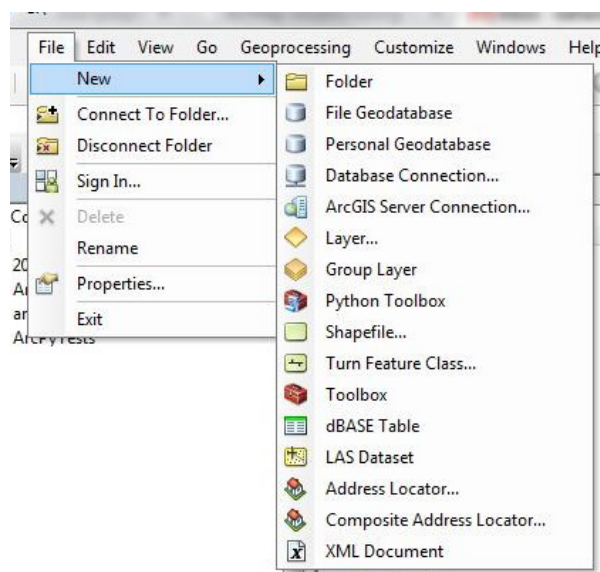
The GeoTagged Photos To Points tool is available in ArcGIS Desktop Standard license. The tool located in the Data Management toolbox, allows you to visualize the locations of images taken with a GPS-enabled camera or mobile device (such as an iPhone). The tool creates points from the x-, y-, and z-coordinate information stored in Exif (Exchangeable image file format) metadata within the photo.

1. Create a folder containing geotagged photos

- Browse to an appropriate location, **File > New > Folder**.
- Copy and paste the photos into this folder.

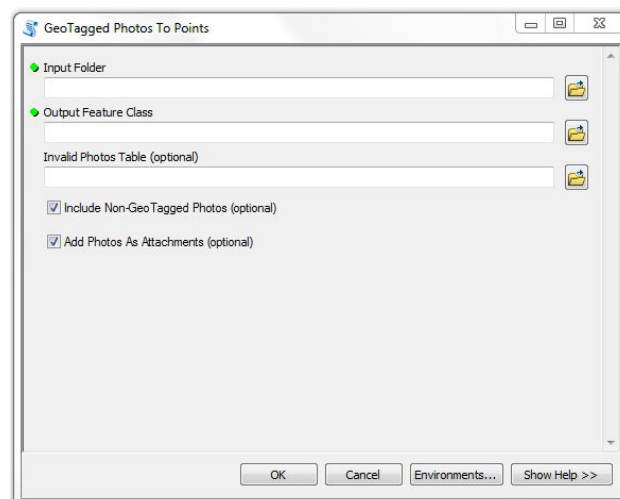
2. Create an output file geodatabase

- Open ArcCatalog, click **Start > All Programs > ArcGIS > ArcCatalog10.1**.
- Browse to the appropriate location, click **File > New > File Geodatabase**.

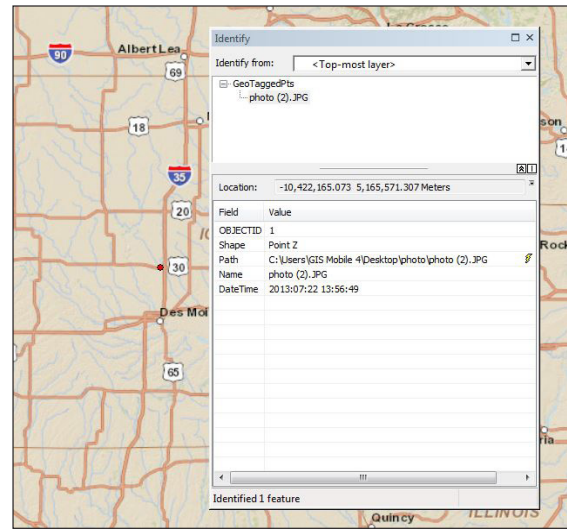


3. Use the GeoTagged Photos To Points tool

- Open ArcMap, click **Start > All Programs > ArcGIS > ArcMap10.1**.
- Open the GeoTagged Photos To Points tool, click the **ArcToolbox** icon in the Standard toolbar > **Data Management > Photos > GeoTagged Photos To Points** *Hint: Use the Search window with the keyword “photos.”*
- In the Geotagged Photos to Points dialog box, click on the **Folder Icon** next to the Input Folder box and navigate to the folder containing your photos.
- Next to the Output Feature Class box, click the **Folder Icon** and browse to the new file geodatabase and name the output accordingly.
- To use the Invalid Photos Table option click the **Folder Icon** next to the box and navigate to your new file geodatabase. Name the output table accordingly.

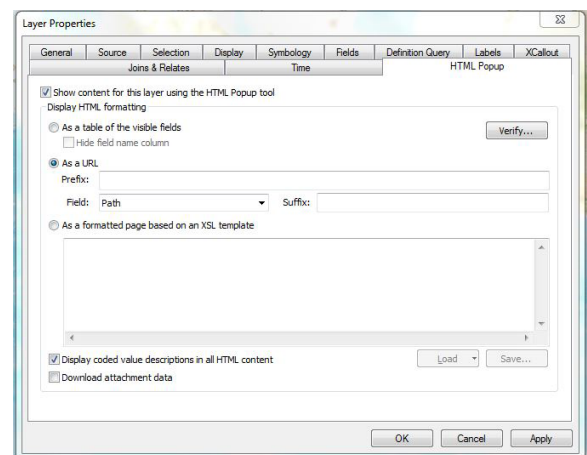
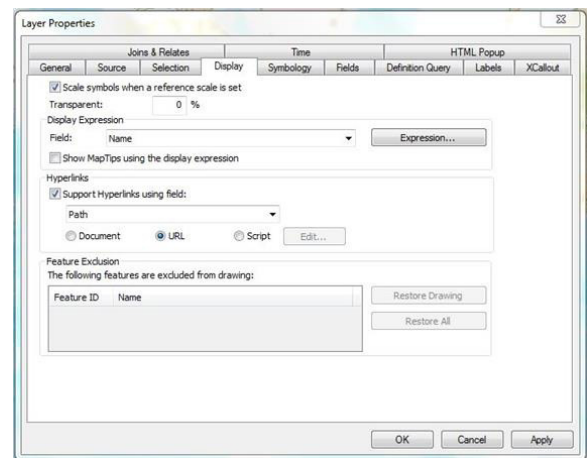


- f. To include all photos as records in the output feature class, check the **Include Non-Geo Tagged Photos** box.
- g. Uncheck the box for **Add Photos As Attachments**. This will allow the process to run faster, especially if your folder contains a large number of photos. Checking the box would copy the photos into the file geodatabase.
- h. After completing all the required inputs click **OK**.



4. How to access mapped geotagged images

- a. **Identify cursor:** Click on the **Identity Cursor Icon** and use the cursor to select a point. The Identify window will pop up. By clicking the **Hyperlink Icon** at the end of the Path Value field the image will open up in your default image viewer.
- b. **Hyperlink tool:** First right click on the point feature layer in the Table Of Contents and click **Properties**. Select the **Display** tab at the top of the dialog box and check the **Support Hyperlinks using field**. In the drop-down menu select **Path** and check **URL**. If you leave the default **Document** checked, the hyperlink tool will open your photo in a default image editor such as Photoshop. Click **OK**. Click on the **Hyperlink Icon** and use the cursor to select a point and view the image in a web browser.
- c. **HTML Popup tool:** Use to select points and view the photo within the ArcMap document. Right click on the point feature layer in the table of contents and click **Properties**. Open the HTML Popup tab and select **As a URL**. In the dropdown Field option select **Path**. Click **Verify** to test the path. Click **OK**.



New with 10.2

The GeoTagged Photos To Points tool now adds a direction field to the output table with a value between 0 and 359.99. If the device does not have this capability, a value of -9999 will be produced in the direction field.

Contact:

Bailey Hanson bahanson@iastate.edu, 515-520-1436 or for more information about the Geospatial Technology Program, contact: Professor Christopher J. Seeger, ASLA, GISP cjseeger@iastate.edu, 515-509-0651. This task sheet and more are available at www.extension.iastate.edu/gis

...and justice for all

The US Department of Agriculture (USDA) prohibits discrimination in all its programs and activities on the basis of race, color, national origin, age, disability, and where applicable, sex, marital status, familial status, parental status, religion, sexual orientation, genetic information, political beliefs, reprisal, or because all or part of an individual's income is derived from any public assistance program. (Not all prohibited bases apply to all programs.) Persons with disabilities who require alternative means for communication of program information (Braille, large print, audiotape, etc.) should contact USDA's TARGET Center at 202-720-2600 (voice and TDD). To file a complaint of discrimination, write to USDA, Director, Office of Civil Rights, 1400 Independence Avenue SW, Washington, DC 20250-9410, or call 800-795-3272 (voice) or 202-720-6382 (TDD).

Issued in furtherance of Cooperative Extension work, Acts of May 8 and June 30, 1914, in cooperation with the US Department of Agriculture. Cathann Kress, director, Cooperative Extension Service, Iowa State University of Science and Technology, Ames, Iowa.