

Exporting Maps at Consistent Scale, Location and Dimension

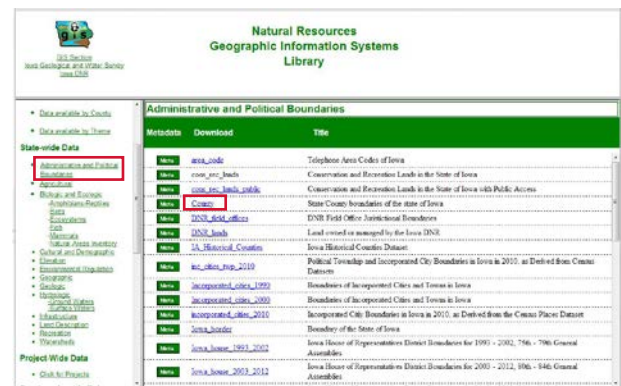
ArcGIS 10.1, 10.2

Welcome to the Essential ArcGIS Task Sheet Series. This series supplements the Iowa State University GIS Geospatial Technology Training Program short course series, “Essential ArcGIS Tutorial Series.” The task sheets are designed to provide quick, easy instructions for performing specific tasks in GIS.

The default ArcMap layout has the dimensions of a normal piece of paper, 8.5 by 11 inches. However, there are cases where map graphics will not be printed to a page but displayed as a graphic on a webpage or powerpoint presentation. In those cases it may be necessary to create map layouts at specific pixel dimensions. This task sheet will demonstrate how to change map layout and export settings to create appropriate sized graphics.

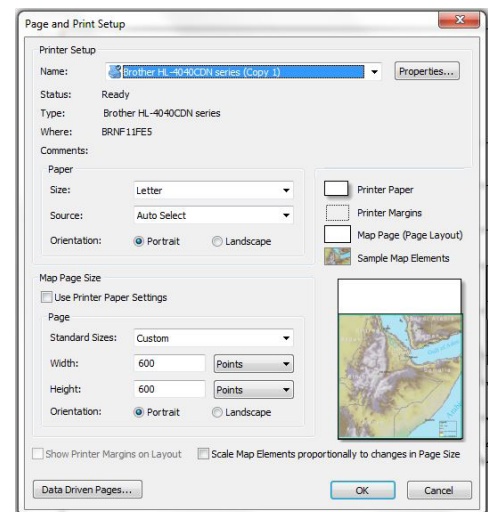
1. Prepare Data for Task Sheet

- To follow along with this task sheet you can use your own data, download other data, or follow this example and download a shapefile from the NRGIS website.
- In a web browser, navigate to the NRGIS Library website at <https://programs.iowadnr.gov/nrgislibx/>.
- Download the **County** dataset and add it to a blank ArcMap document.



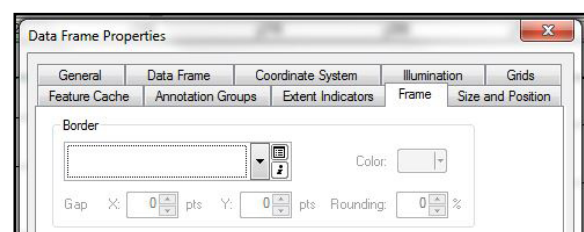
2. Set Layout Page Dimensions and Units

- Set map document to Layout View and open the Page and Print Setup window. Click **View > Layout View** then click **File > Page and Print Setup...**
- Uncheck the box next to **Use Printer Paper Settings** and confirm that **Custom** is selected from the **Standard Sizes** drop-down menu.
- Set the **Width** and **Height** units to **Points**. Set the value to **600** for both and click **Ok**.



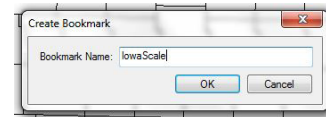
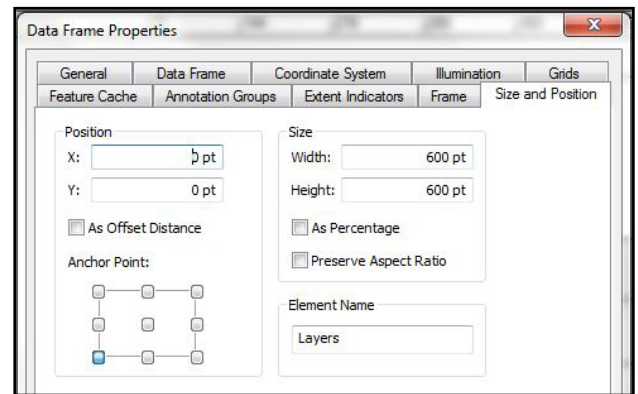
3. Set Data Frame Properties

- Open the Data Frame Properties window. Click on **View > Data Frame Properties...**
- Click on the **Frame** tab. In the **Border** drop-down select **<None>**.
- Click on the **Size and Position** tab and set the **Anchor Point**: to the bottom left hand corner. Set **Position X** and **Y** to **0 pt** and set **Size Width** and **Height** to **600 pt**. Click **Ok**. *Hint: In step 3c, if you keep a data frame border it may cause the border to display on two of the four sides of the image.*



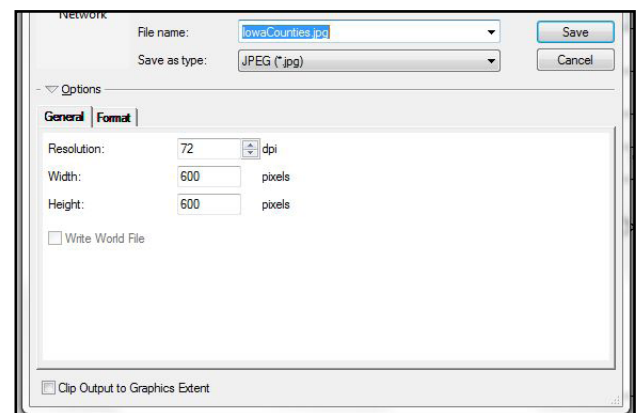
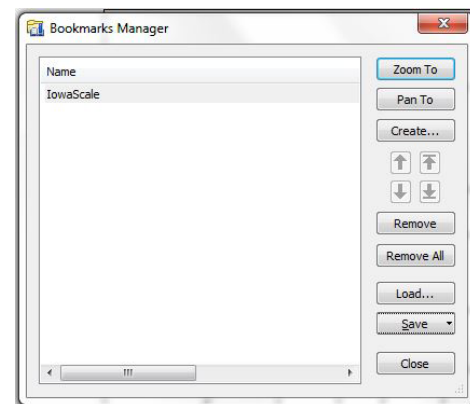
4. Create and Manage Bookmarks for Consistent Export Scale and Location

- Right click on the **county** layer and click **Zoom To Layer** or zoom to area of interest.
- Create a new bookmark. Click **Bookmarks > Create Bookmark...** and change **Bookmark Name:** to **IowaScale** and click **Ok**.
- Open the Bookmarks Manager window and save the bookmark. Click **Bookmarks > Manage Bookmarks... > Save > Save Selected...** and name the .dat file as **IowaScale.dat**. click **Save** and **Close**. *Hint: Once an extent is established and saved as an external bookmark it will allow you to use that extent for other map documents and data frames.*



5. Set Export Map Options

- Open the export map window. Click **File > Export Map...** and choose the file type JPEG or PNG. *Hint: JPEG is a lossy compressed file format which means it is useful for storing photographs at a smaller size because the file is compressed and is a common choice for use on the web. For storing line drawings, text, and graphics at a small file size PNG is a better choice because it is a lossless compressed file format.*
- In **Options** under the **General** tab set the **Resolution** to **72 dpi**. This will automatically set the **Width** and **Height** to **600 pixels**. *Hint: dpi stands for dots per inch and is a measure of spatial dot density. Setting the output resolution to dpi makes sense because our layout units were in points (Step 2c). A point is a typesetting unit that is equal to 1/72nd of an inch. With an output resolution set to 72 dpi, 1 point is equal to 1 pixel. Thus the 600 by 600 point layout now becomes a 600 by 600 pixel dimension.*
- If you would like a graphic with a transparent data frame or background set the **Save as type** to **PNG**. Under the **Format** tab set both **Background Color** and **Transparent Color** to **White**.
- Click **Save**.



Contact:

Bailey Hanson bahanson@iastate.edu, 515-520-1436 or Professor Christopher J. Seeger, ASLA, GISP cjseeger@iastate.edu, 515-509-0651 for more information about the Geospatial Technology Program. This task sheet and more are available at www.extension.iastate.edu/communities/gis

...and justice for all

The US Department of Agriculture (USDA) prohibits discrimination in all its programs and activities on the basis of race, color, national origin, age, disability, and where applicable, sex, marital status, familial status, parental status, religion, sexual orientation, genetic information, political beliefs, reprisal, or because all or part of an individual's income is derived from any public assistance program. (Not all prohibited bases apply to all programs.) Persons with disabilities who require alternative means for communication of program information (Braille, large print, audiotape, etc.) should contact USDA's TARGET Center at 202-720-2600 (voice and TDD). To file a complaint of discrimination, write to USDA, Director, Office of Civil Rights, 1400 Independence Avenue SW, Washington, DC 20250-9410, or call 800-795-3272 (voice) or 202-720-6382 (TDD).

Issued in furtherance of Cooperative Extension work, Acts of May 8 and June 30, 1914, in cooperation with the US Department of Agriculture. Cathann Kress, director, Cooperative Extension Service, Iowa State University of Science and Technology, Ames, Iowa.