

Field Calculations: Changing Text Case

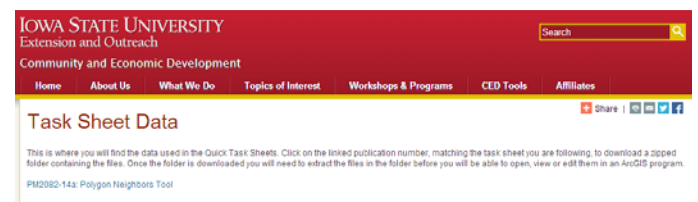
ArcGIS 10.4+

Welcome to the Essential ArcGIS Task Sheet Series. This series supplements the Iowa State University Geospatial Technology Training Program short course series. The task sheets are designed to provide quick, easy instructions for performing mapping tasks.

Attribute data is often not in the format that is needed or desired for map labeling or table joining. For example, text may be in all uppercase or lowercase letters. With the built in title case command within the field calculator in ArcMap you are able to change text from an existing field or quickly rewrite the field to a different case. This task sheet will go through the process of changing the text case using the field calculator and Python functions.

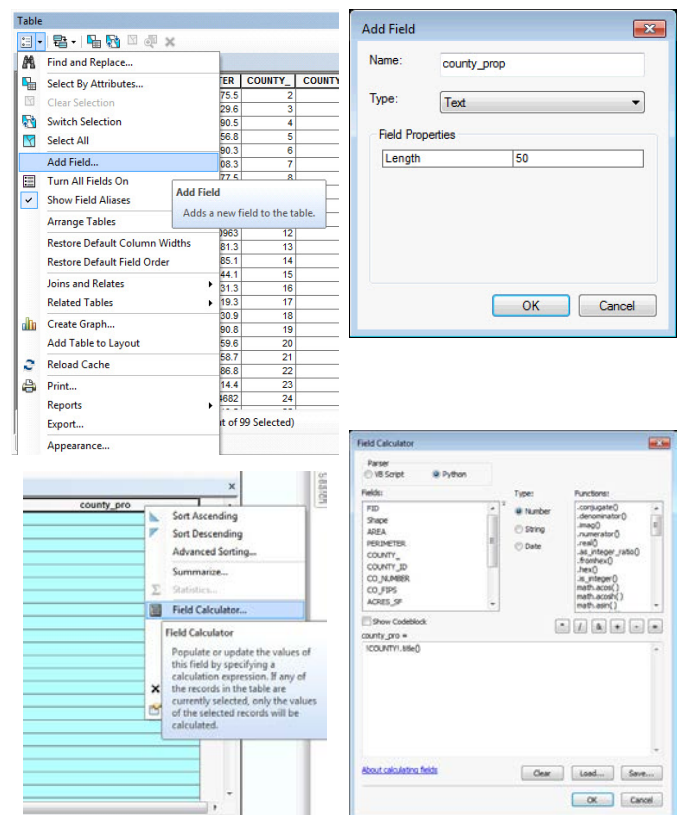
1. Download the Data

- To download the data used in this task sheet, navigate to www.extension.iastate.edu/communities/gis/quicktasksheets/data in a web browser. Click on the publication number: **PM2082-16j**.
- When the download is complete, you will need to unzip the folder in order to access the files in ArcGIS. The folder contains a shapefile of the counties in Iowa.



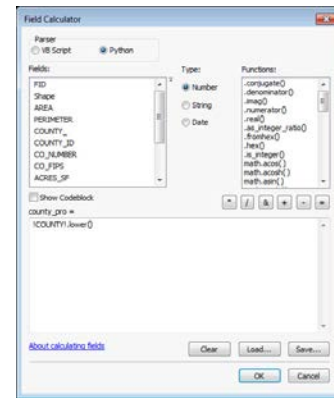
2. Changing Text to Title Case

- Open the attribute table for the **county** shapefile. You will notice that all the county names in the **COUNTY** field are all in uppercase letters.
- Click on the **Table Options** icon in the top left corner of the attribute table, and select **Add Field**. In the **Name** text box, type in **county_proper**. In the **Type** drop-down select **Text**. Leave the **Length** at **50** and click **OK**. *Note: the county_proper field name contains too many characters and will be shortened to county_pro.*
- Select the **county_pro** field so it becomes highlighted, right-click, then select **Field Calculator**. If you get a warning message about calculating outside of an edit session, select **Yes** to continue.
- In the **Field Calculator** select **Python** as the **Parser**. Double-click on **COUNTY** from the list of **Fields**, select **String** as the **Type** and double-click on **.title()** from the list of **Functions**. The following code should appear in the **county_pro =** text box: **!COUNTY!.title()**. Click **OK**.
- All the county names in the **county_pro** field should now be in title case.



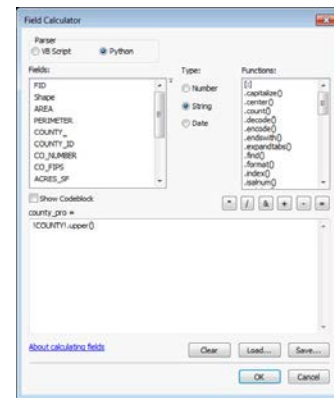
3. Changing Text to all Lowercase Characters

- Repeat **steps 2b-2c** to add a new field or run the field calculator on **county_pro**. *Note: this will overwrite the text case that is currently set.*
- In the **Field Calculator** select **Python** as the **Parser**. Double-click on **COUNTY** from the list of **Fields**, select **String** as the **Type** and double-click on **.lower()** from the list of **Functions**. The following code should appear in the **county_pro =** text box: **!COUNTY!.lower()**. Click **OK**.
- The county names should now be in lowercase.



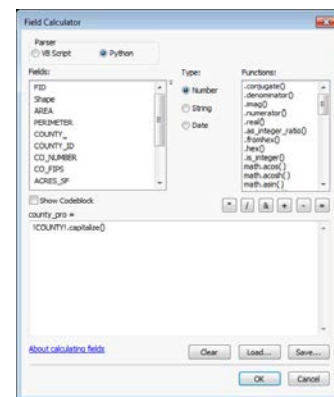
4. Changing Text to all Uppercase Characters

- Repeat **steps 2b-2c** to add a new field or run the field calculator on **county_pro**. *Note: this will overwrite the text case that is currently set.*
- In the **Field Calculator** select **Python** as the **Parser**. Double-click on **COUNTY** from the list of **Fields**, select **String** as the **Type** and double-click on **.upper()** from the list of **Functions**. The following code should appear in the **county_pro =** text box: **!COUNTY!.upper()**. Click **OK**.
- The county names should now be in uppercase.



5. Changing Text to Capitalize

- Repeat **steps 2b-2c** to add a new field or run the field calculator on **county_pro**. *Note: this will overwrite the text case that is currently set.*
- In the **Field Calculator** select **Python** as the **Parser**. Double-click on **COUNTY** from the list of **Fields**, select **String** as the **Type** and double-click on **.capitalize()** from the list of **Functions**. The following code should appear in the **county_pro =** text box: **!COUNTY!.capitalize()**. Click **OK**.
- The first letter of the first word of each county name should now be capitalized.



Contact:

Bailey Hanson bahanson@iastate.edu, 515-520-1436 or Professor Christopher J. Seeger, ASLA, GISP cjseeger@iastate.edu, 515-509-0651 for more information about the Geospatial Technology Program. This task sheet and more are available at www.extension.iastate.edu/communities/gis

...and justice for all
The US Department of Agriculture (USDA) prohibits discrimination in all its programs and activities on the basis of race, color, national origin, age, disability, and where applicable, sex, marital status, familial status, parental status, religion, sexual orientation, genetic information, political beliefs, reprisal, or because all or part of an individual's income is derived from any public assistance program. (Not all prohibited bases apply to all programs.) Persons with disabilities who require alternative means for communication of program information (Braille, large print, audiotape, etc.) should contact USDA's TARGET Center at 202-720-2600 (voice and TDD). To file a complaint of discrimination, write to USDA, Director, Office of Civil Rights, 1400 Independence Avenue SW, Washington, DC 20250-9410, or call 800-795-3272 (voice) or 202-720-6382 (TDD).

Issued in furtherance of Cooperative Extension work, Acts of May 8 and June 30, 1914, in cooperation with the US Department of Agriculture. Cathann Kress, director, Cooperative Extension Service, Iowa State University of Science and Technology, Ames, Iowa.