

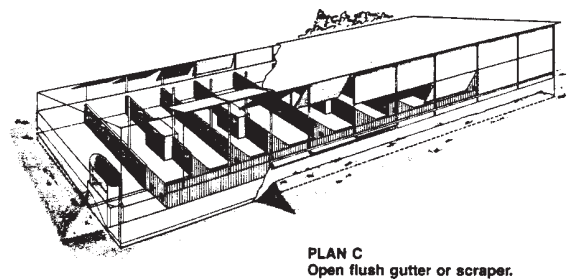
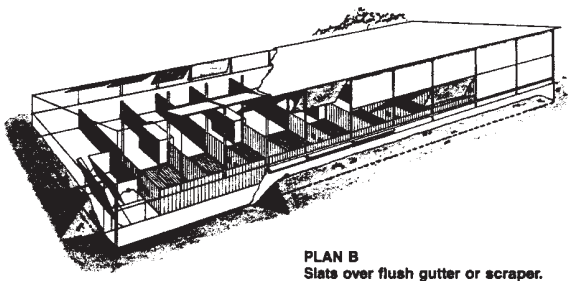
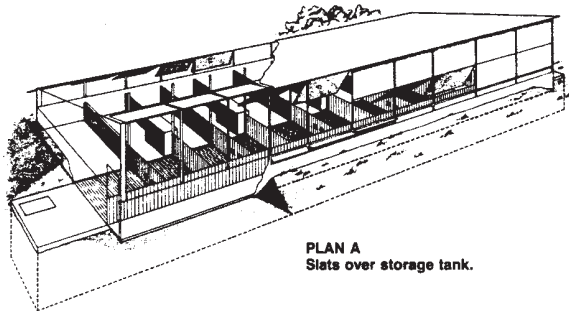
MWPS-72603

Swine Growing - Finishing Building

28' x 80' monoslope, modified open-front building to house about 240 pigs. Three plans are included. Plan A shows a 10' wide by 8' deep manure pit under slats. Plan B shows a 10' wide flush gutter under slats. Plan C shows a 5' wide open flush gutter. Natural ventilation.

CAUTION!

Additional professional services will be required to tailor this plan to your situation, including but not limited to: assurance of compliance with codes and regulations; review of specifications for materials and equipment; supervision of site selection, bid letting and construction; and provision for utilities, waste management, roads or other access. **Furthermore, any deviation from the given specifications may result in structural failure, property damage, and personal injury including loss of life.**



MIDWEST PLAN SERVICE
Cooperative Extension Work in Agriculture and Home Economics and Agricultural Experiment Stations of North Central Region - USDA Cooperating
Swine Growing-Finishing Building
Title Page
MIDWEST PLAN NO. 72603

WARRANTY DISCLAIMER

This plan provides conceptual information only. **Neither midwest plan service nor any of the cooperating land-grant universities, or their respective agents or employees, have made, and do not hereby make, any representation, warranty or covenant with respect to the specifications in this plan.** Additional professional services will be required to tailor this plan to your situation, including but not limited to: assurance of compliance with codes and regulations; review of specifications for materials and equipment; supervision of site selection, bid letting and construction; and provision for utilities, waste management, roads or other access.

Plan MWPS-72603 Swine Growing-Finishing Building

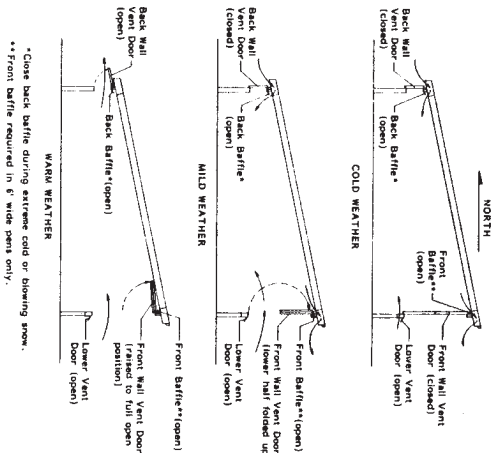
Monoslope, Modified Open Front

This plan is for a 28' x 80' monoslope building housing about 240 pigs. Semi-management (class) finisher/packer pens on the large front doors provide some passive solar heat.

The building shown is sized for a 10 sow farrowing building, scheduled for 7-8 farrowing/yr (80 pigs produced/farrowing). Double the building length or duplicate the building for a 20 sow farrowing building, scheduled for 7-8 farrowing/yr. Raise pigs in a nursery to about 75 lb (12 wks), then move them to the 6' wide pens of the growing-finishing building. At about 125 lb (17-18 wks), move pigs to the 8' wide pens; at about 175 lb (22-23 wks), move pigs to the 10' wide pens.

Plan A shows a 10' wide by 8' deep manure storage pit under slats. Plan B shows a 10' wide flush gutter under slats. Plan C shows a 5' wide open flush gutter.

VENTILATION MANAGEMENT

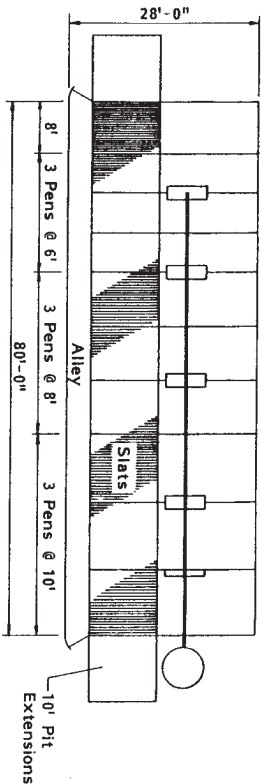


Different size pigs require different ventilation management. Smaller pigs require higher temperatures and less ventilating air. The smaller pigs in the 6' wide pens require hovers (over the back 30% of the pen), floor heat, and a front baffle. Generally, open the vents for small pigs at warmer temperatures and open them less than for the larger pigs.

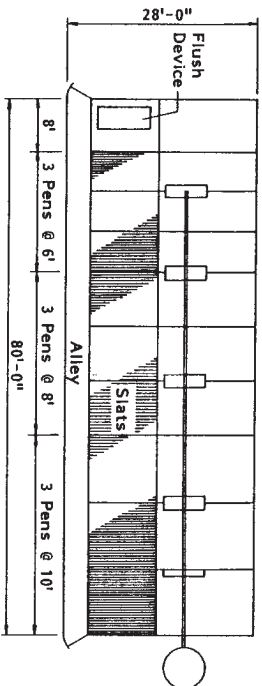
Cold Weather: Adjust the front (south) baffle, back baffle, and lower front vent doors to control moisture. Back wall and front wall vent doors are closed.

Mild Weather: Fold up the lower half of the front wall vent doors to allow more air in to control temperature. Back baffle, front baffle, and lower front vent doors are full open. Back wall vent doors are closed.

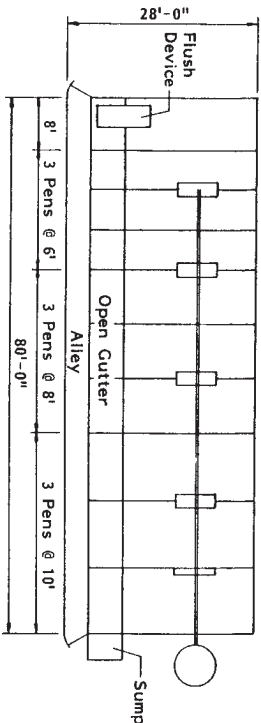
Warm Weather: Open the back wall vent doors and swing up both halves of the front wall vent doors to allow full crossflow of air.



FLOOR PLAN A
Slats over storage tank.



FLOOR PLAN B
Slats over flush gutter or scraper.

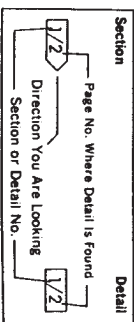
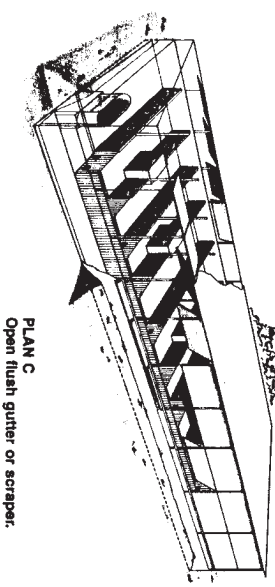
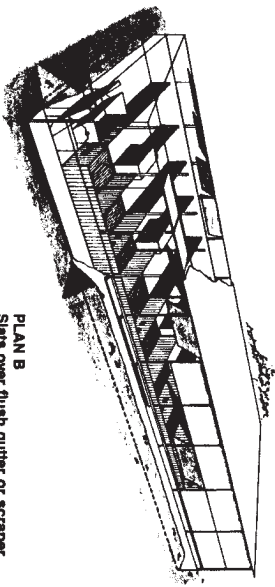
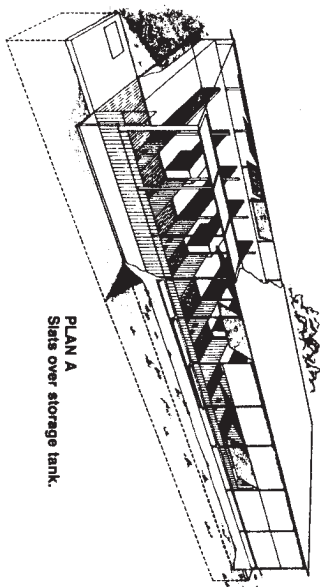


FLOOR PLAN C
Open flush gutter or scraper.

Related Midwest Plan Service Publications

- MWPS-8 Swine Housing and Equipment Handbook.
- MWPS Plan-74303, Liquid Manure Tanks.
- MWPS-AED 22, Tilt-Up Concrete Construction for Agriculture.

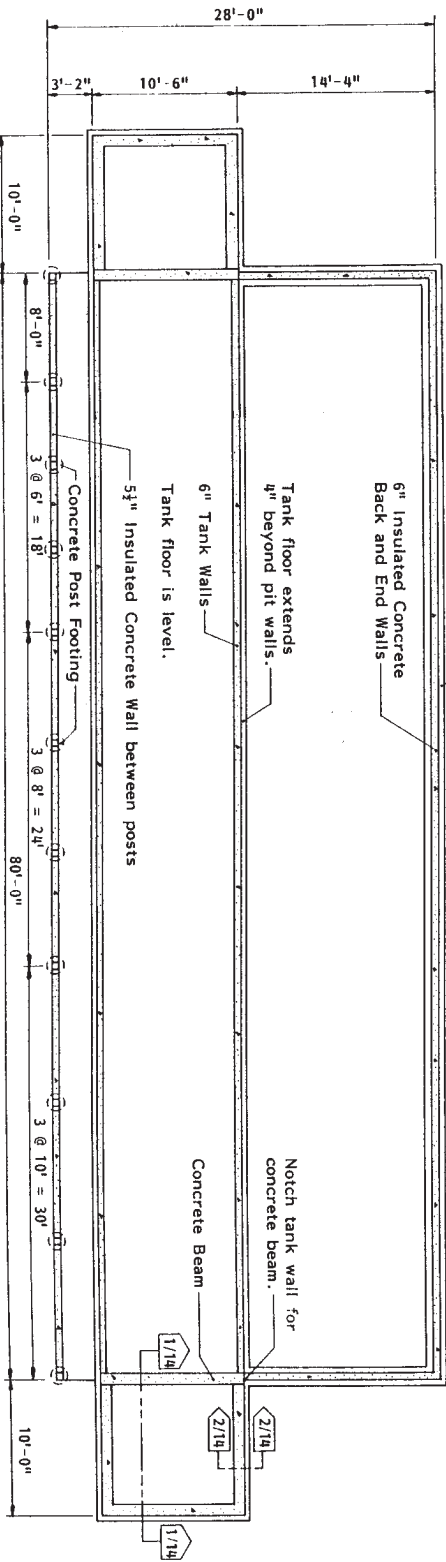
See Page 16 for Utility and Material Specifications



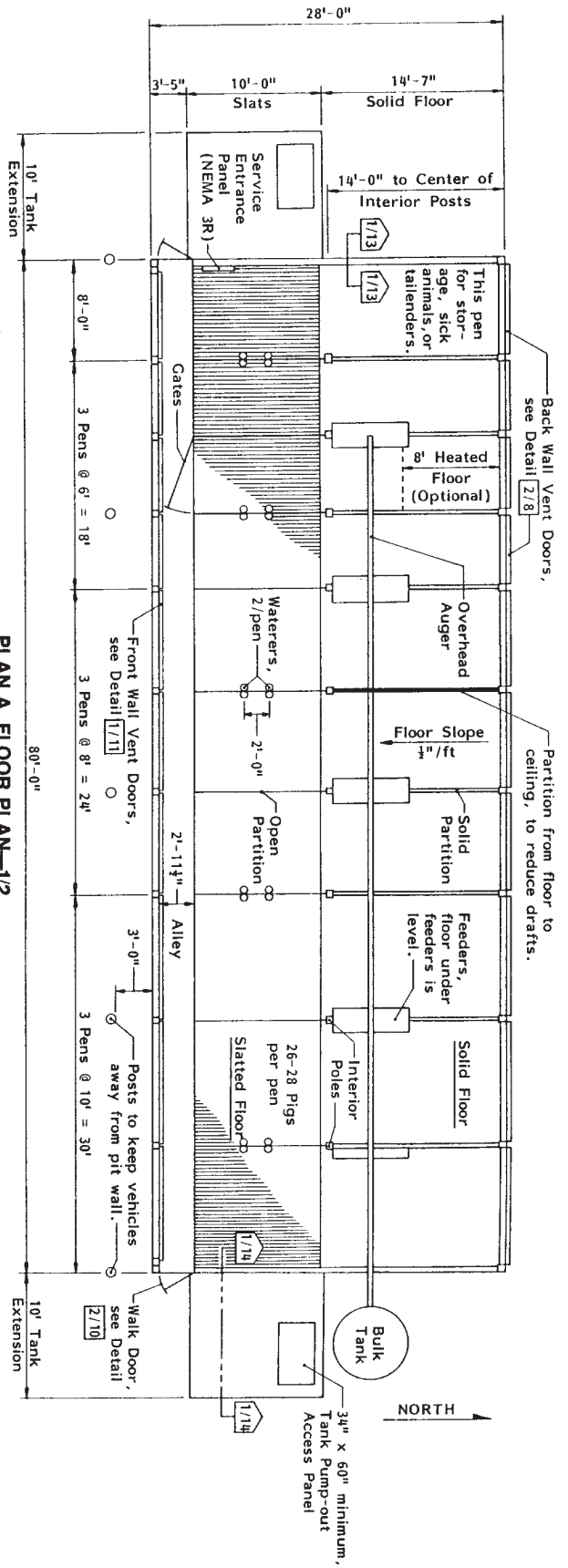
Section & Detail Indicator

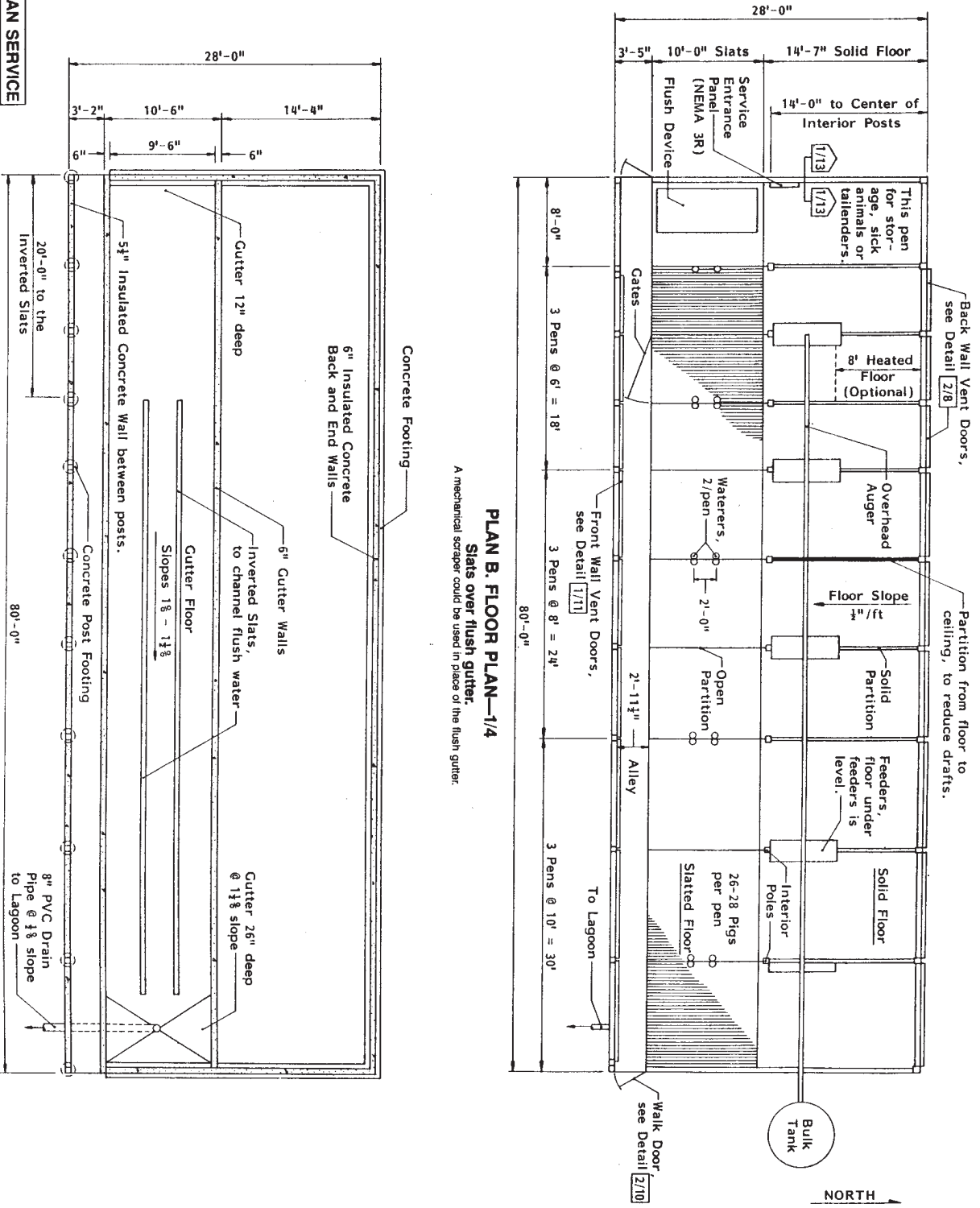
MWPS MIDWEST PLAN SERVICE	
Cooperative Extension & Research in Agriculture & Home Economics in the 12 North Central Universities—USDA Cooperating	
SWINE GROWING-FINISHING BUILDING	
Monoslope, Modified Open Front	
16 Pages	Plan No. mwps-72603 Page 1 of 16

PLAN A. FOUNDATION AND TANK PLAN—2/2
 Slats over storage tank.



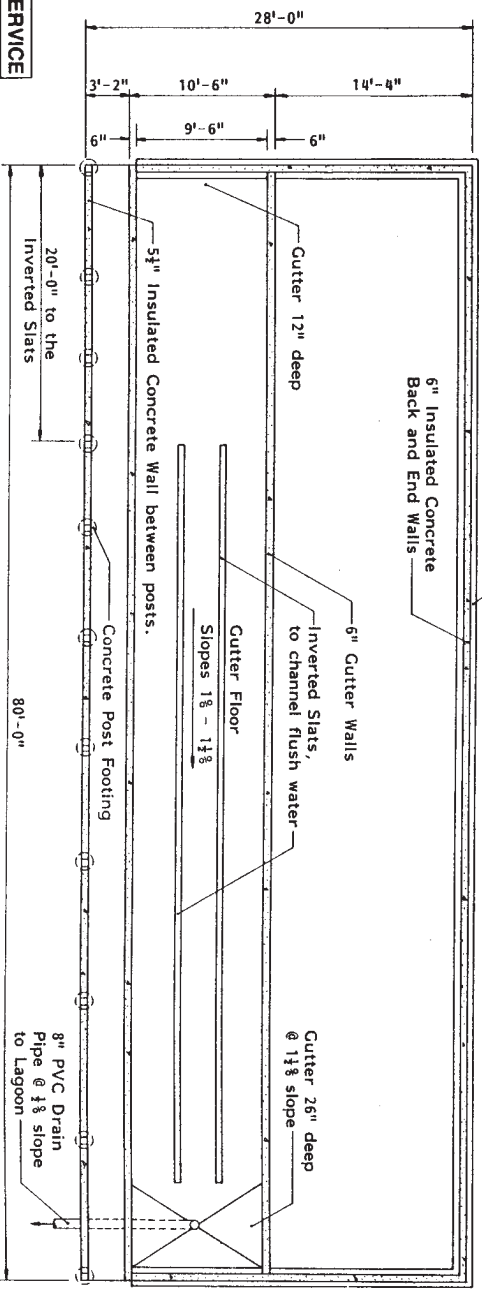
PLAN A. FLOOR PLAN—1/2
 Slats over storage tank.





PLAN B. FLOOR PLAN—1/4
Slats over flush gutter.

A mechanical scraper could be used in place of the flush gutter.

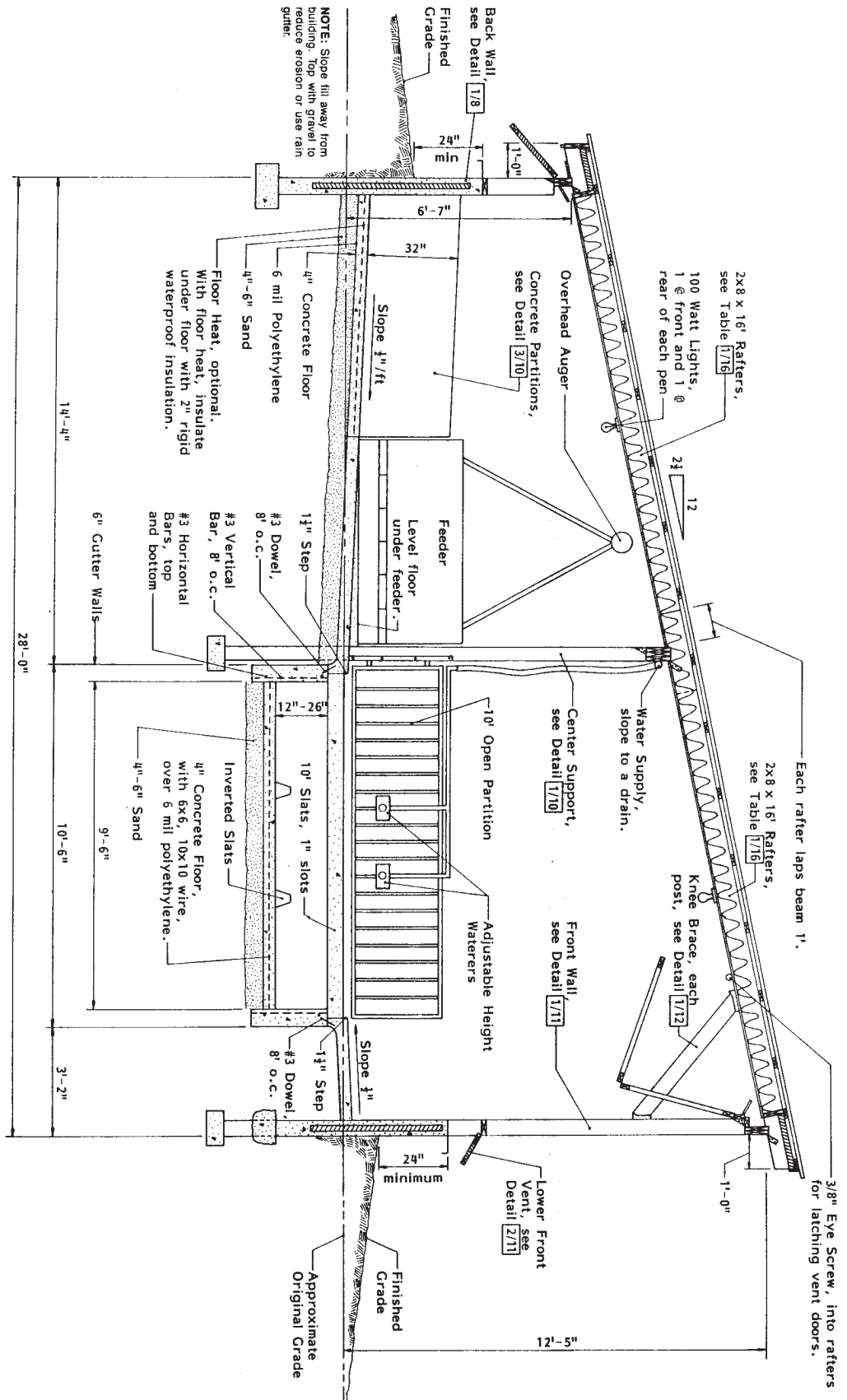


PLAN B. FOUNDATION AND GUTTER PLAN—2/4
Slats over flush gutter.

A mechanical scraper could be used in place of the flush gutter.

IMVOS MIDWEST PLAN SERVICE	
SWINE GROWING-FINISHING BUILDING	
Monoslope, Modified Open Front	
Plan No.	72603
Page	4 of 16

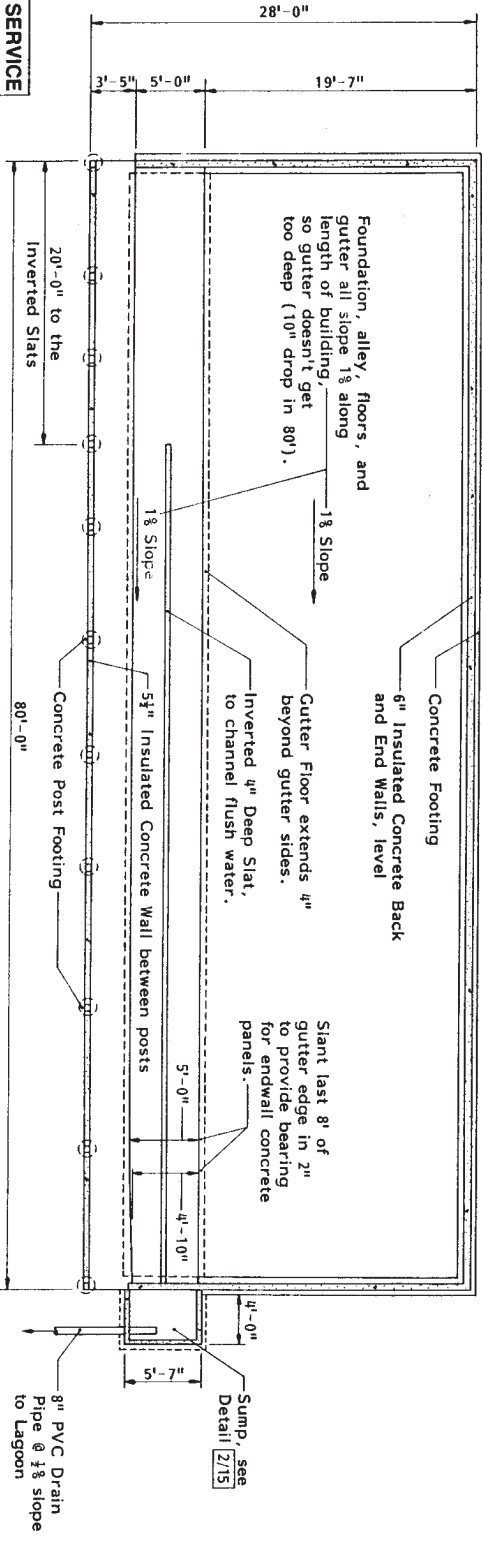
Copyright © 1983 Midwest Plan Service, Ames, IA 50011



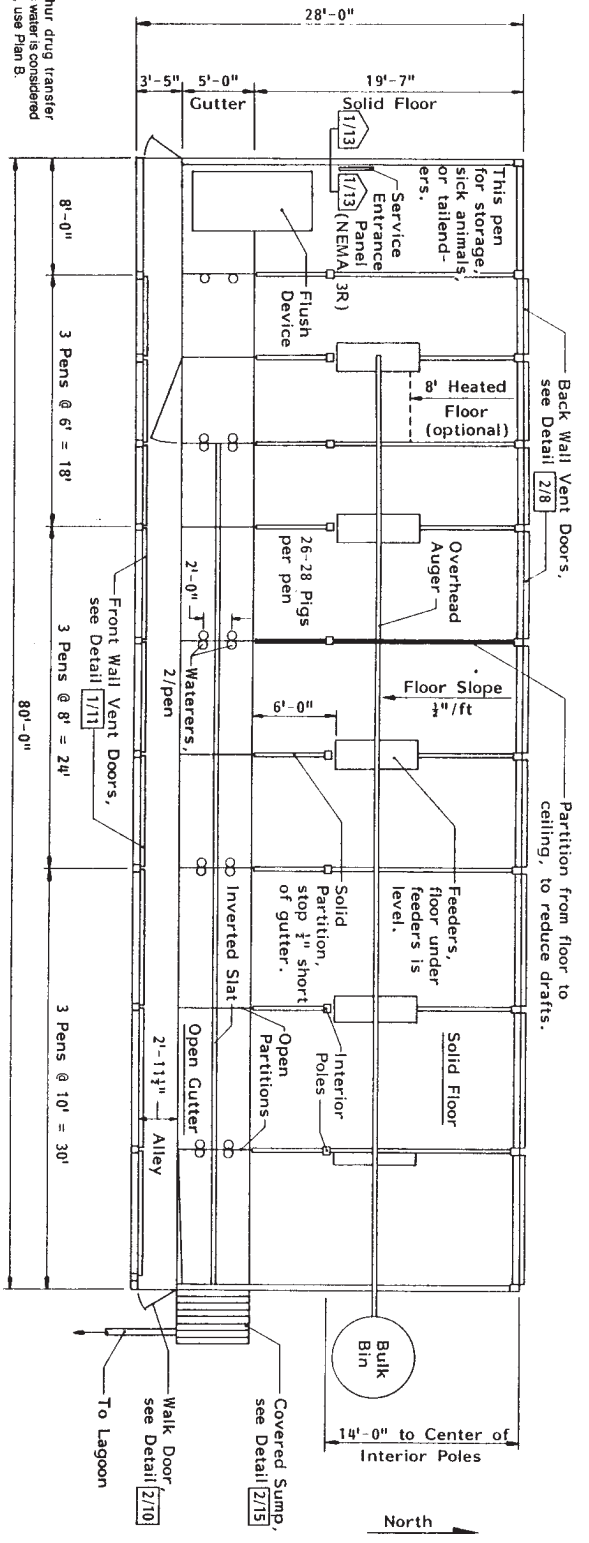
CROSS SECTION B-1/5

Slats over flush gutter.
A mechanical scraper could be used in place of the flush gutter.

MIDS MIDWEST PLAN SERVICE	
SWINE GROWING-FINISHING BUILDING	
Monoslope, Modified Open Front	
Plan No.	72603
Page	5 of 16
Copyright © 1983 Midwest Plan Service, Ames, IA 50011	

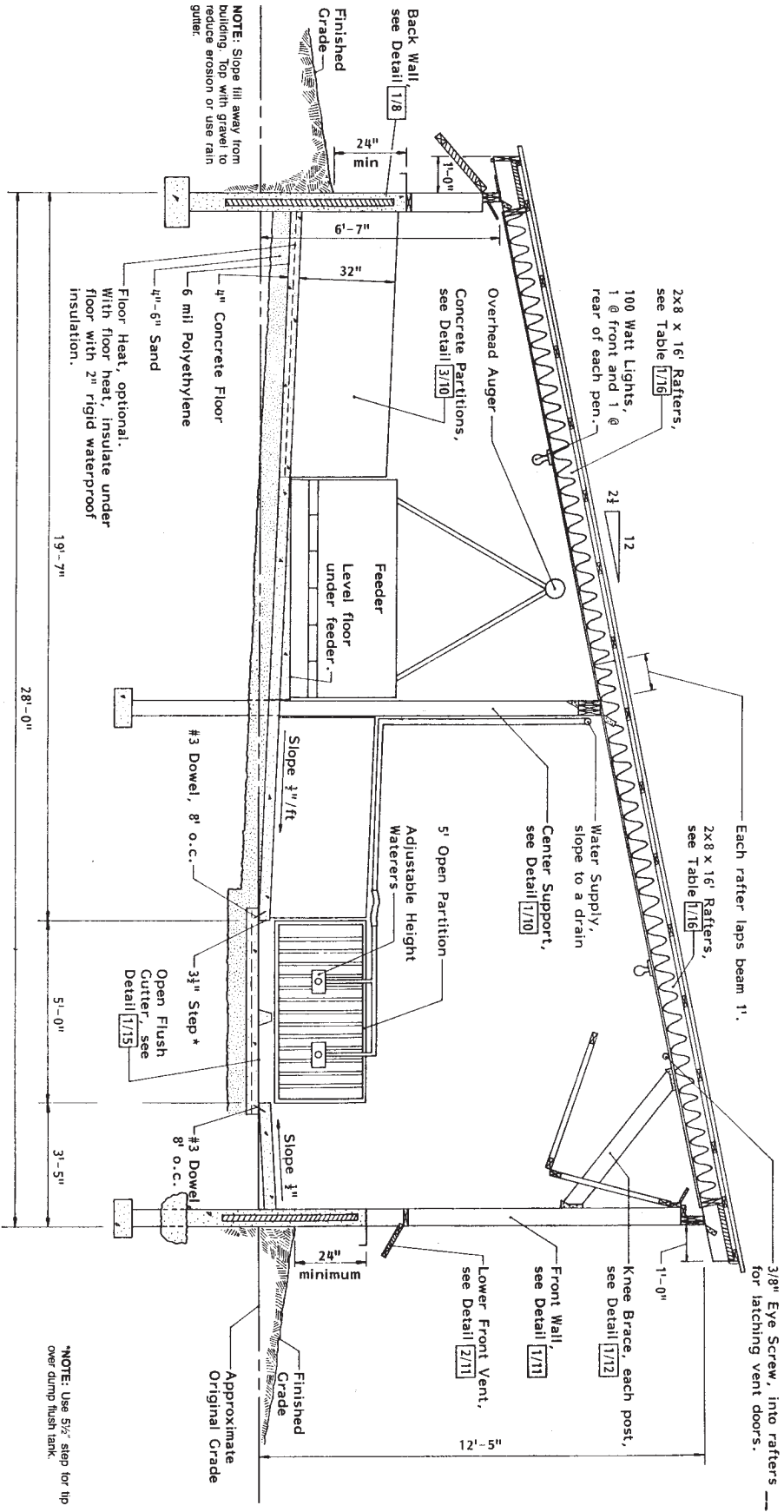


PLAN C. FOUNDATION AND GUTTER PLAN-2/6
 Open flush gutter.
 A mechanical scraper could be used in place of the flush gutter.



PLAN C. FLOOR PLAN-1/6
 Open flush gutter.
 A mechanical scraper could be used in place of the flush gutter.

NOTE: If sulphur drug transfer through the flush water is considered to be a problem, use Plan B.



CROSS SECTION C.-1/7

Open flush gutter.
A mechanical scraper could be used in place of the flush gutter.

MIDWEST PLAN SERVICE

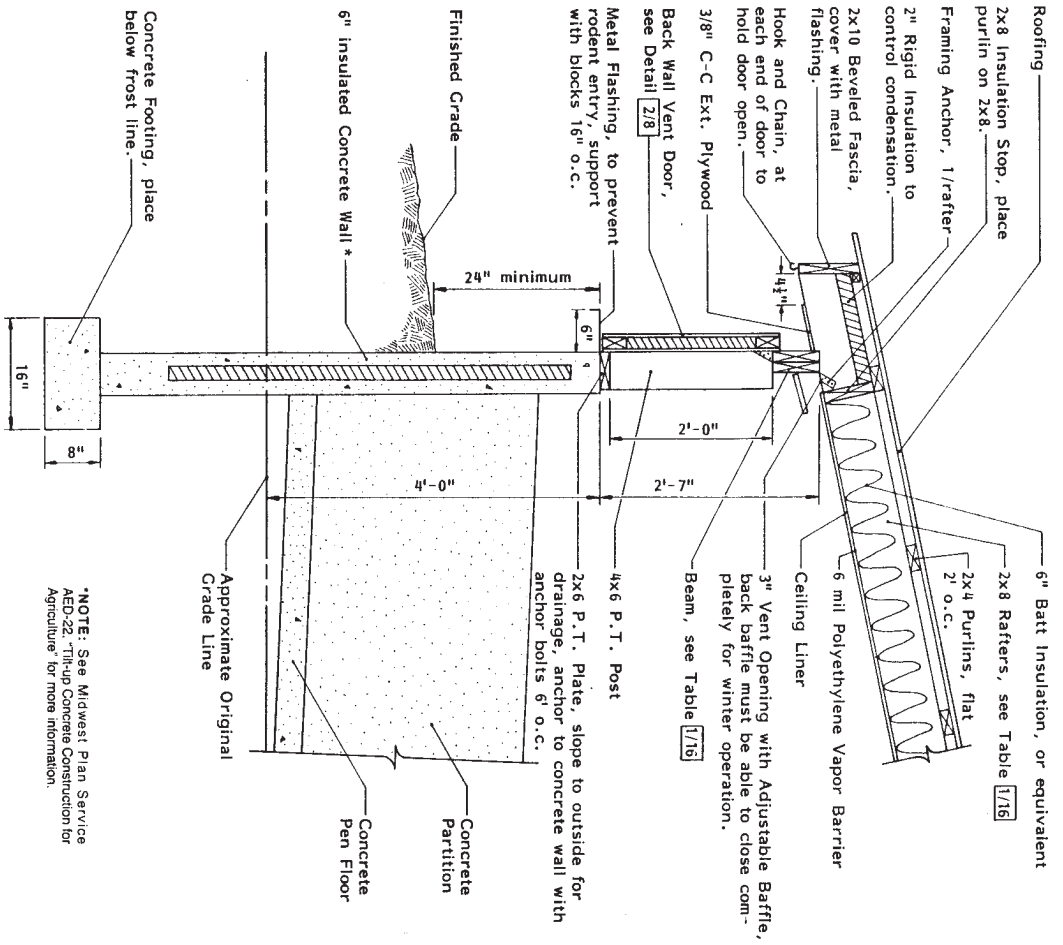
SWINE GROWING-FINISHING BUILDING

Monoslope, Modified Open Front

Plan No. **72603** Page **8** of **16**

Copyright © 1983 Midwest Plan Service, Ames, IA 50011

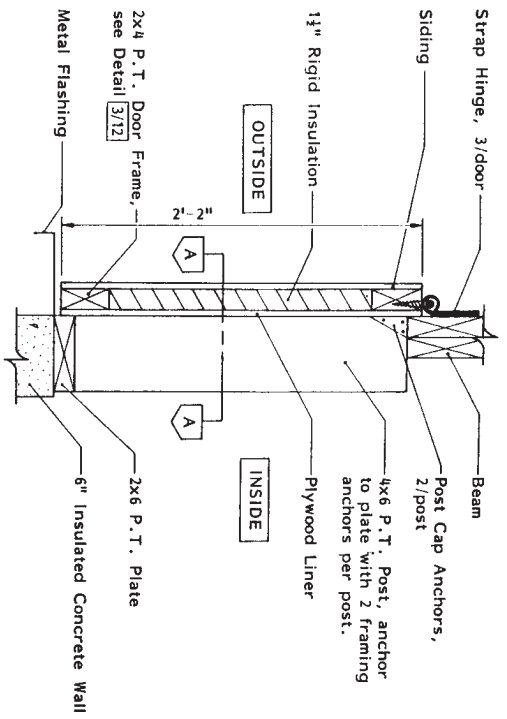
BACK WALL DETAIL—1/8



*NOTE: See Midwest Plan Service AED-22 "Tilt-Up Concrete Construction for Agriculture" for more information.

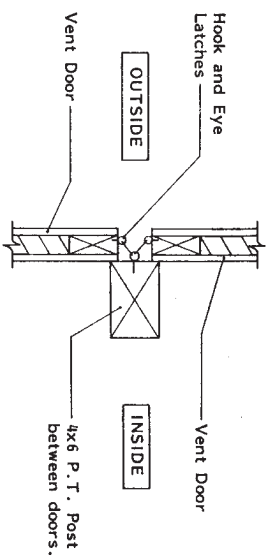
BACK WALL VENT DOOR DETAIL—2/8

Make the back wall vent doors as continuous as possible.

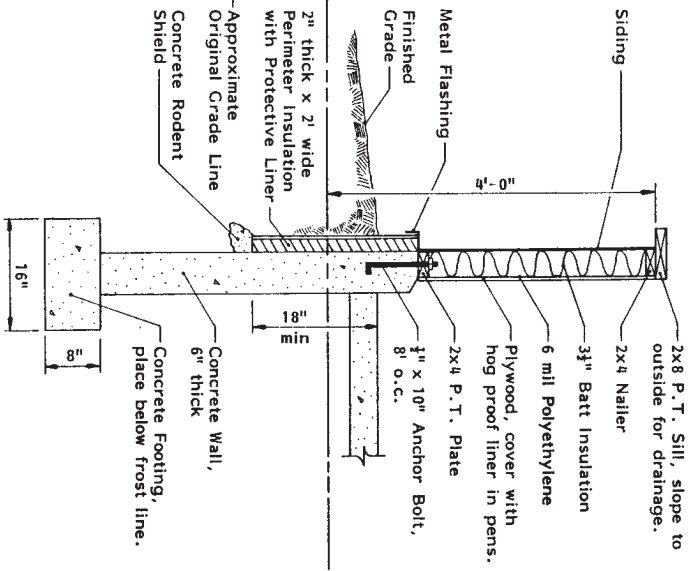
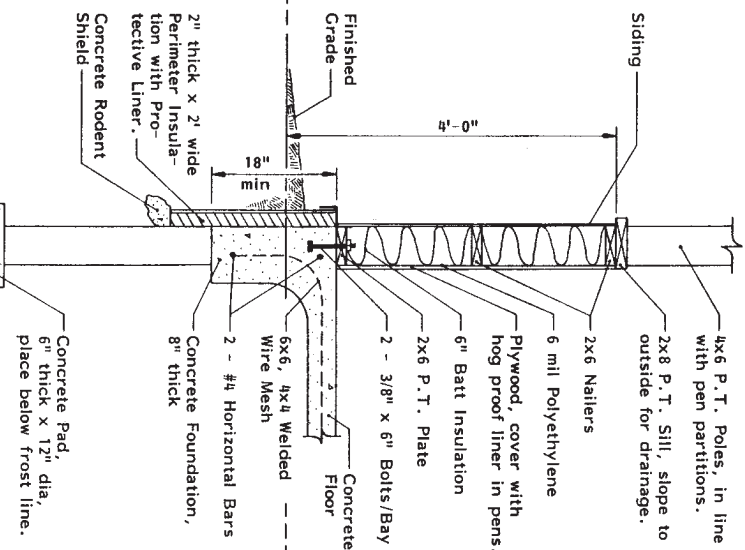
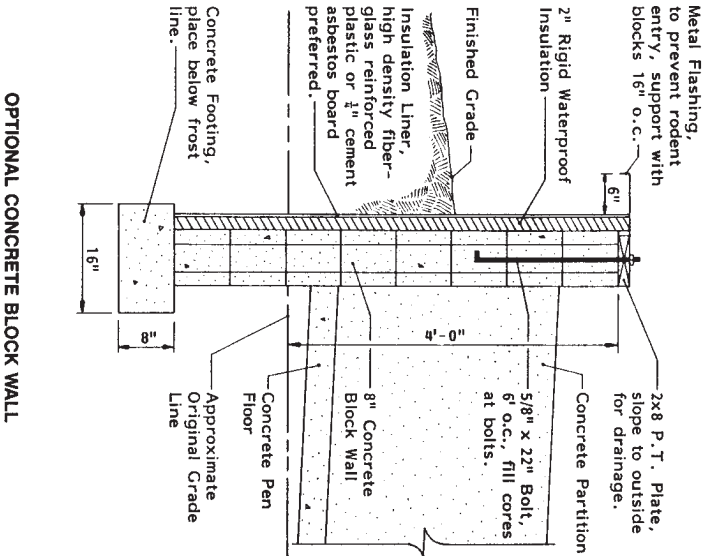


SECTION A-A

Top view of post between back wall vent doors.

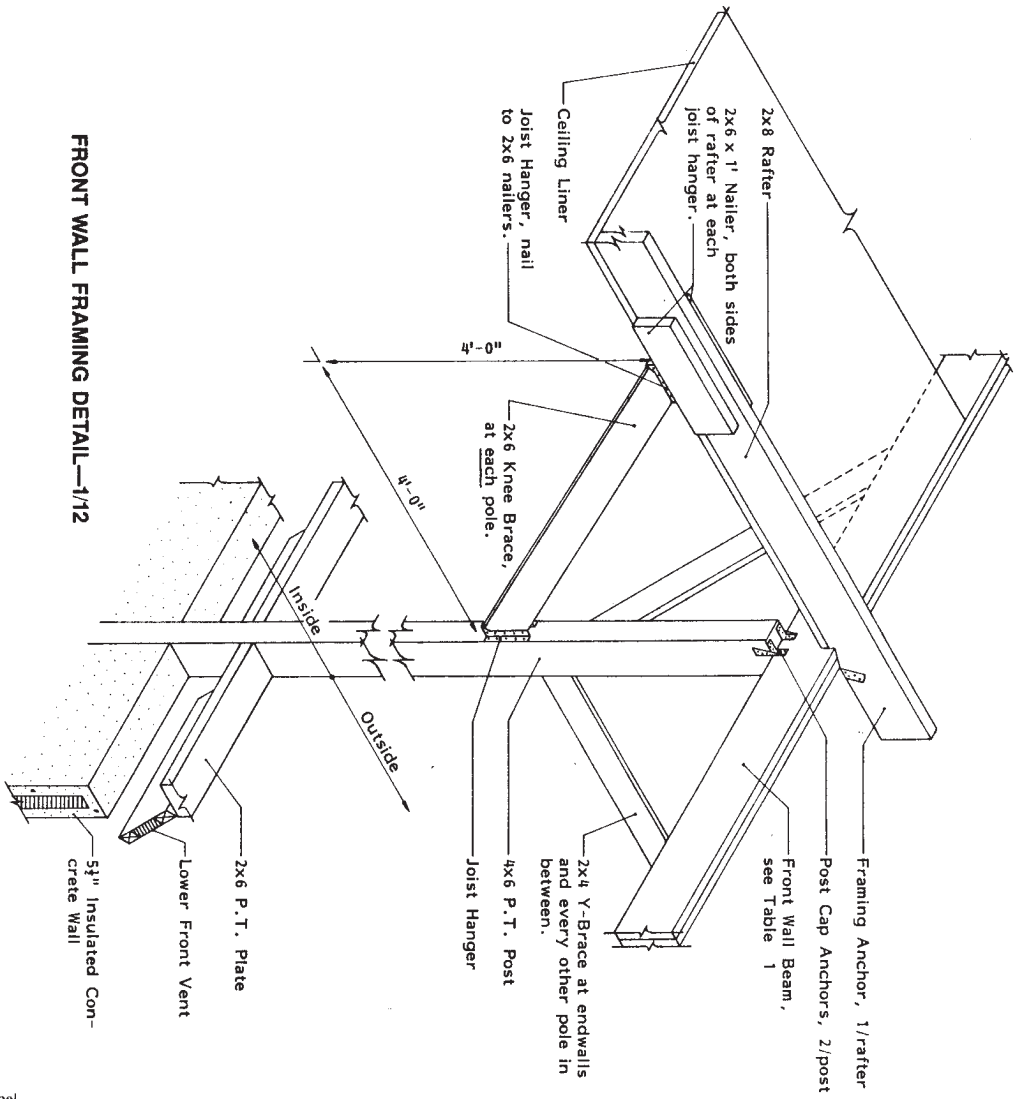


BACK WALL OPTIONS—1/9

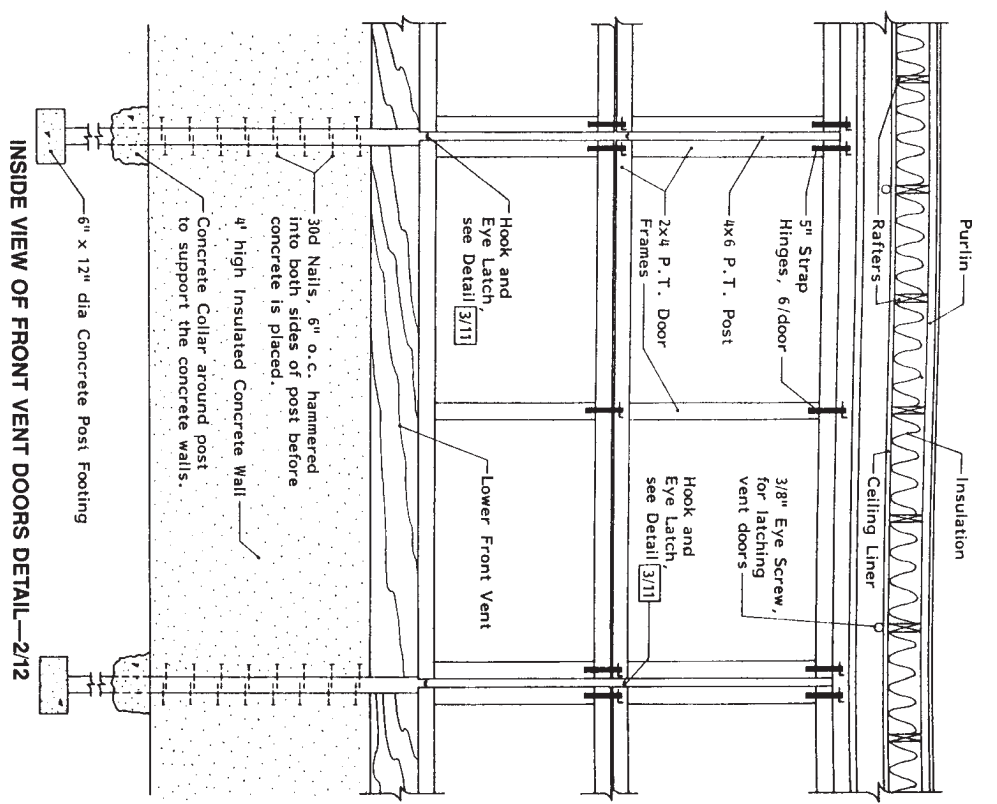


OPTIONAL POLE FRAME WALL

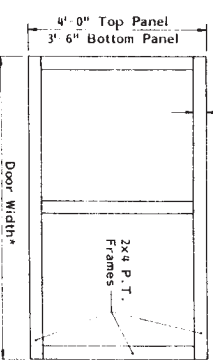
OPTIONAL STUD FRAME WALL



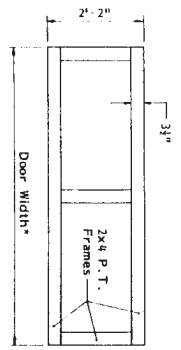
FRONT WALL FRAMING DETAIL—1/12



INSIDE VIEW OF FRONT VENT DOORS DETAIL—2/12

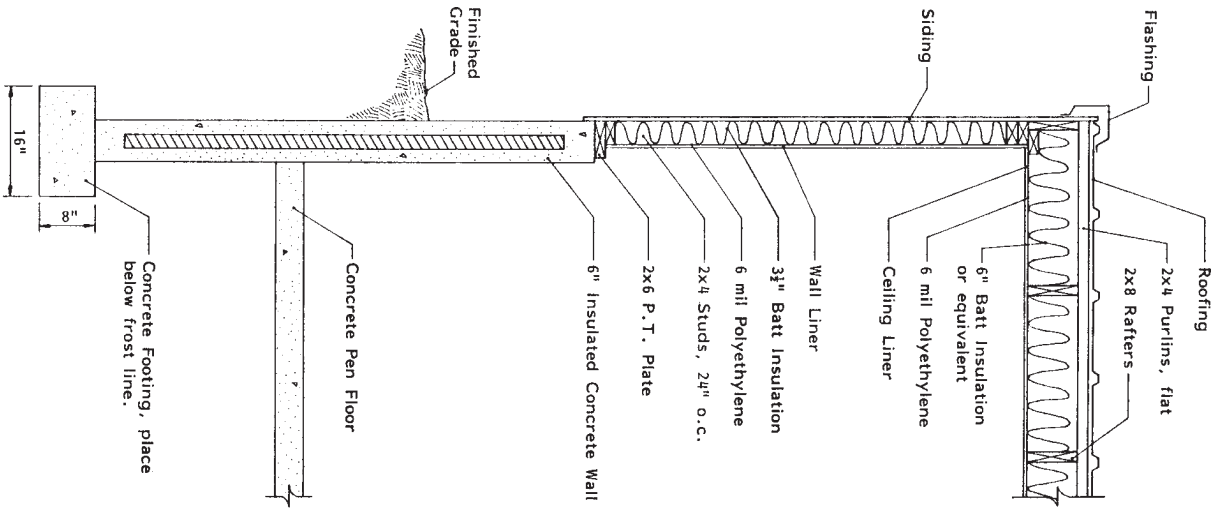


HALF OF FRONT WALL VENT DOOR.
Bottom panel is shorter than top panel,
to make it easier to fold the doors.

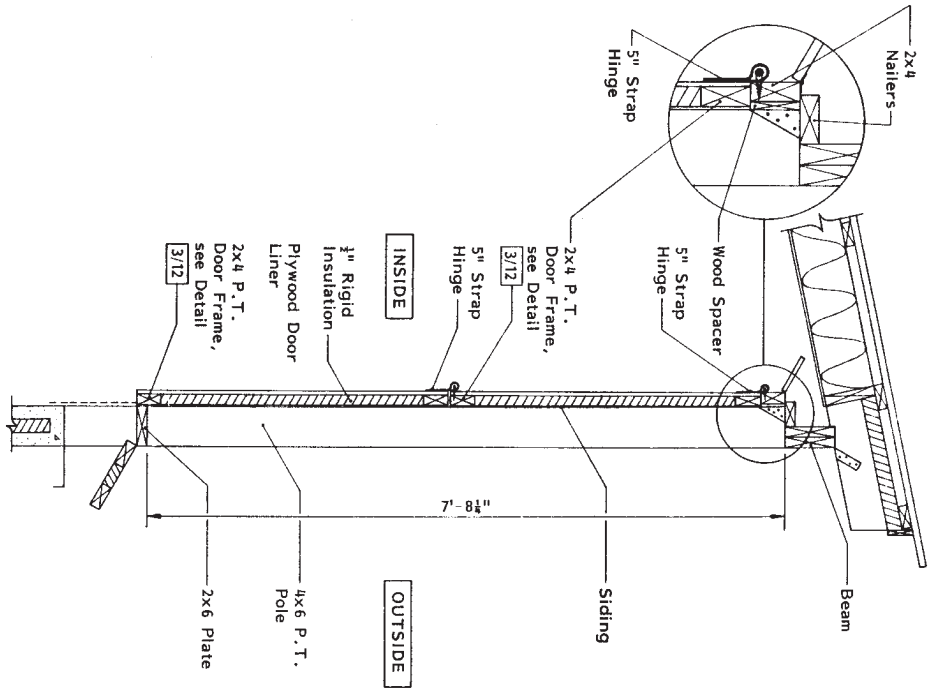


BACK WALL VENT DOOR
 * 5'-10" for 6' Intermediate Bay
 * 7'-10" for 8' Intermediate Bay
 * 9'-10" for 10' Intermediate Bay
 Make front doors in end bays 9 1/2" shorter.

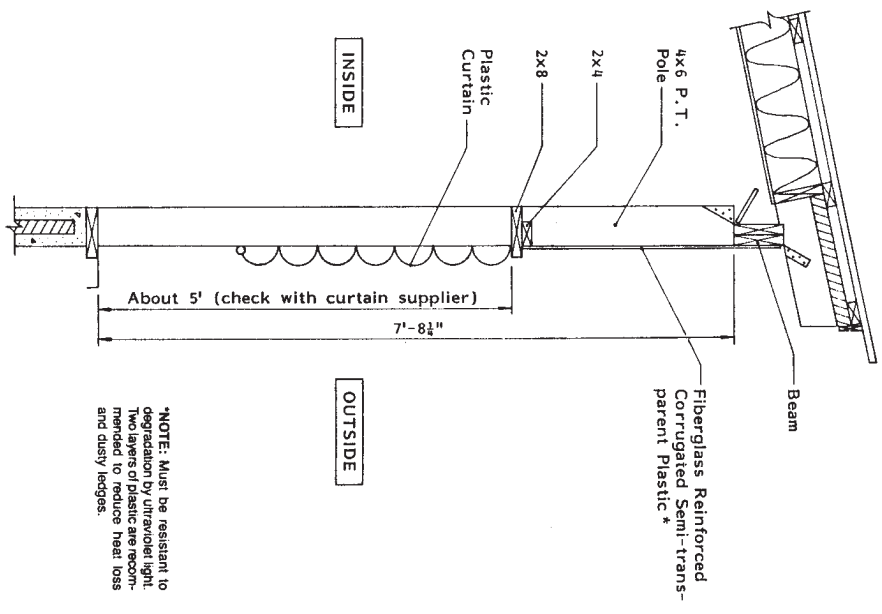
VENT DOOR FRAMES—3/12



ENDWALL DETAIL—1/13



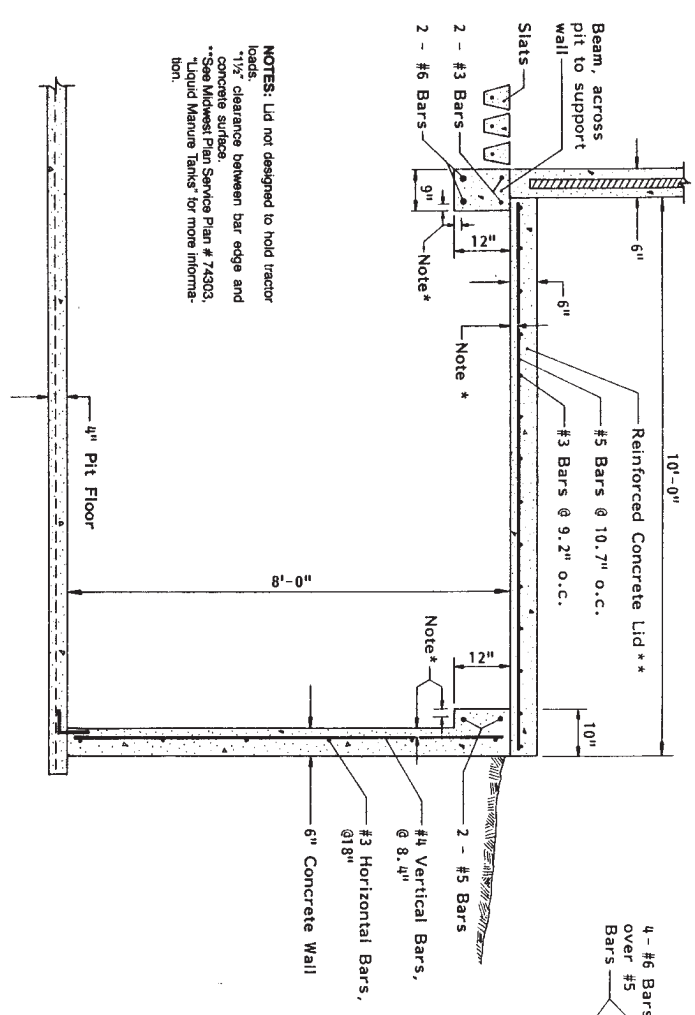
OPTIONAL INSULATED FRONT WALL VENT DOOR DETAIL—2/13
Provide artificial light to improve dunging patterns.



OPTIONAL PLASTIC CURTAIN FRONT WALL VENT DOOR DETAIL—3/13
The lower front vent is not needed if the plastic curtain opens from the bottom. Install two sets of curtains and controllers, one on each side of the draft barrier partition, so the ventilation for the smaller pigs can be controlled separately from the larger pigs.

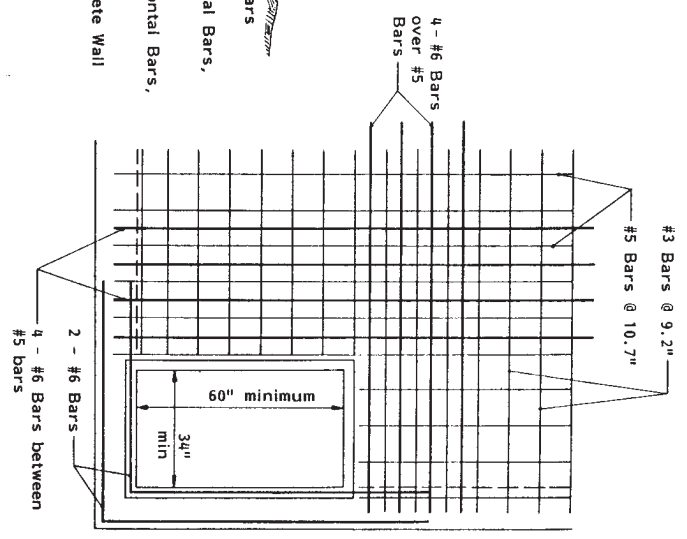
*NOTE: Must be resistant to degradation by ultraviolet light. Two layers of plastic are recommended to reduce heat loss and dusty ledges.

PIT PUMP-OUT SECTION—1/14

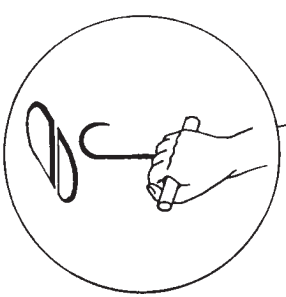
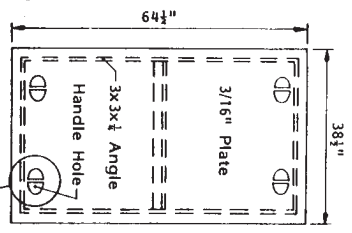


NOTES: Lid not designed to hold tractor loads.
 *1 1/2" clearance between bar edges and concrete surfaces.
 **See Midwest Plan Service Plan # 74303, "Liquid Manure Tanks" for more information.

TOP VIEW

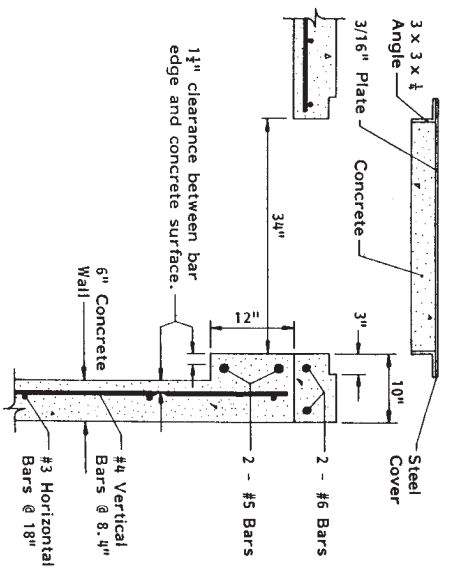


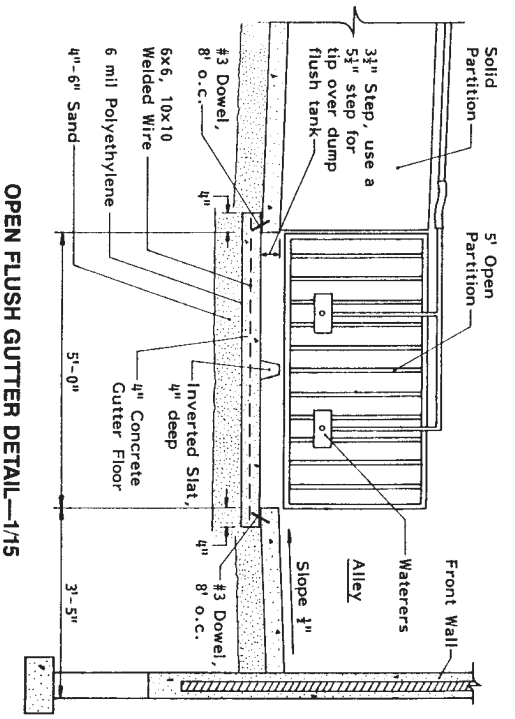
STEEL COVER
 Cover weighs about 250 lbs. Size is adequate for large agitator pump.



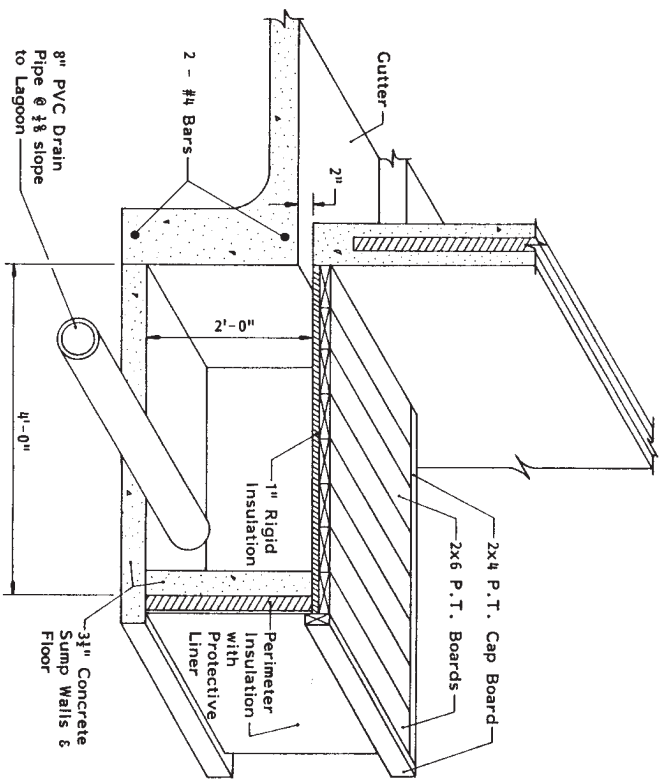
HANDLE HOLE

PIT PUMP-OUT SECTION—2/14

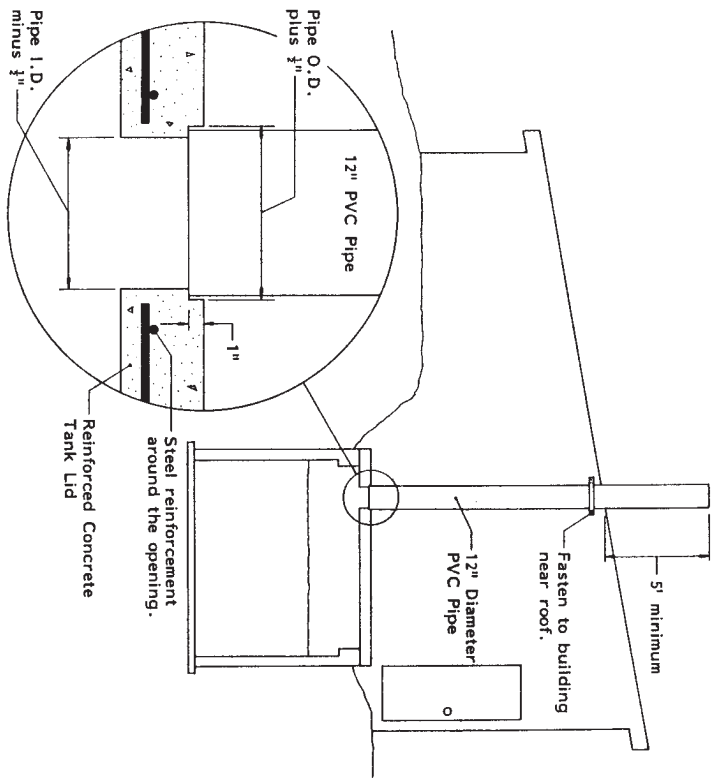




OPEN FLUSH GUTTER DETAIL—1/15



SUMP DETAIL—2/15



OPTIONAL MANURE TANK CHIMNEY VENT DETAIL—3/15
 For venting manure gases from tank. Install one in each manure tank extension, for tanks up to 100' long. For tanks over 100', install one at each end plus one at 50' intervals along tank.

